



Quadrifoglio Group



Finishing Collection

Melamine



EC Eucalyptus



OL Elm



NO Canaletto Walnut



RK Oak

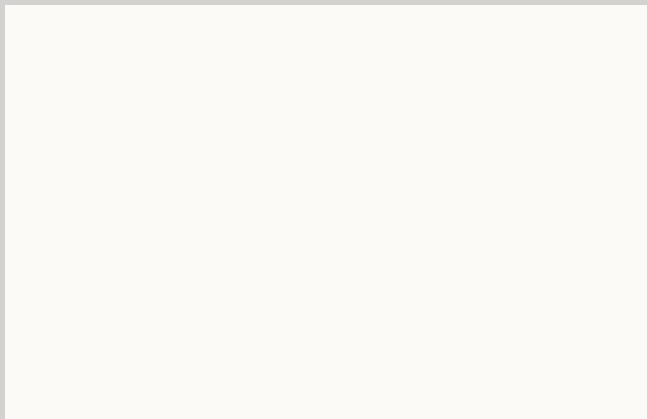


OB Whitened Elm

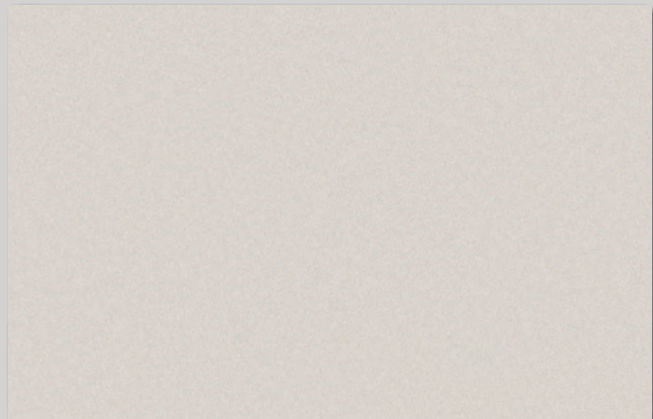


FA Beech

Melamine



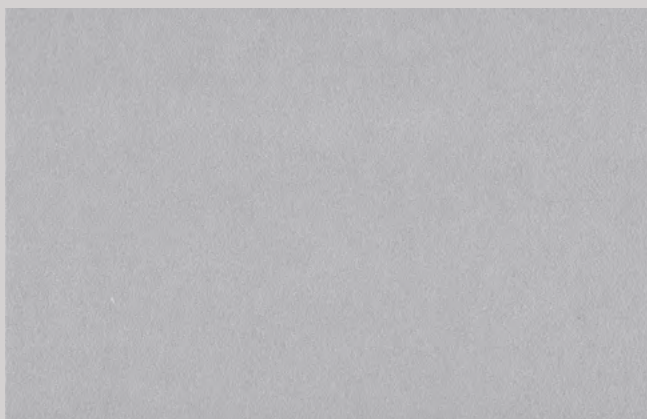
BA White



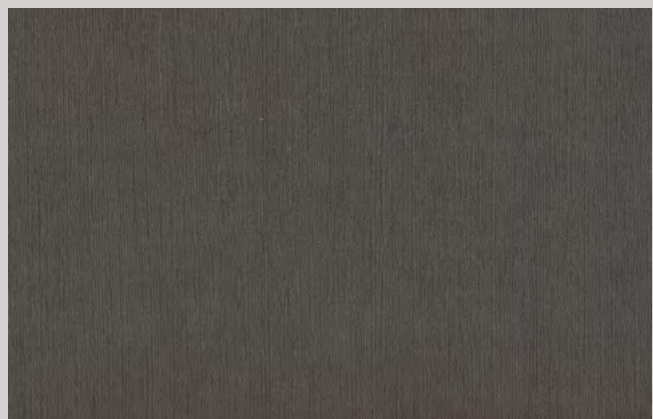
GR Grey



CL Concrete



AA Silver



TA Anthracite Linen

Wood veneer



EB Ebony



NA American Walnut



OG Elm

Leather



CRS Red



CMA Brown

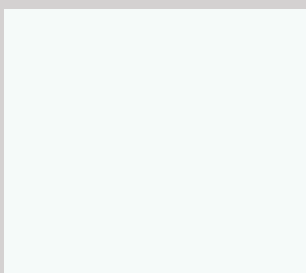


CGA Anthracite

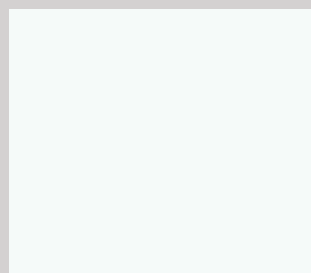


CNE Black

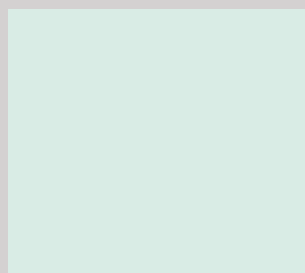
Glass



I White



H Matt White



S1 Light Green

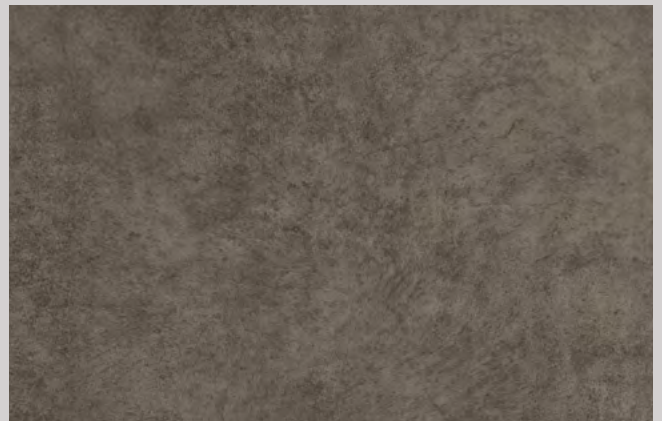
Porcelain stoneware



LCB Collection Bianco



LFT Fokos Terra

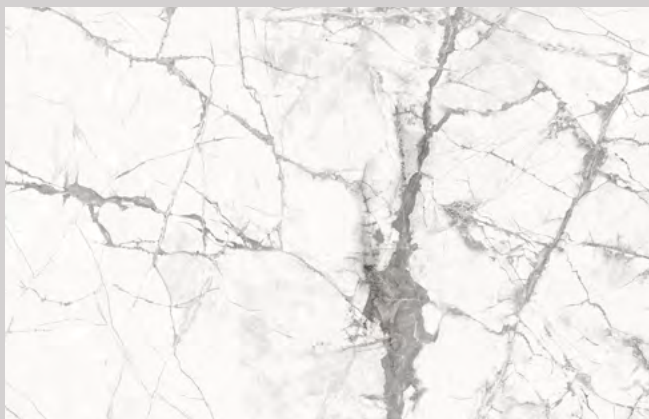


LFP Fokos Piombo

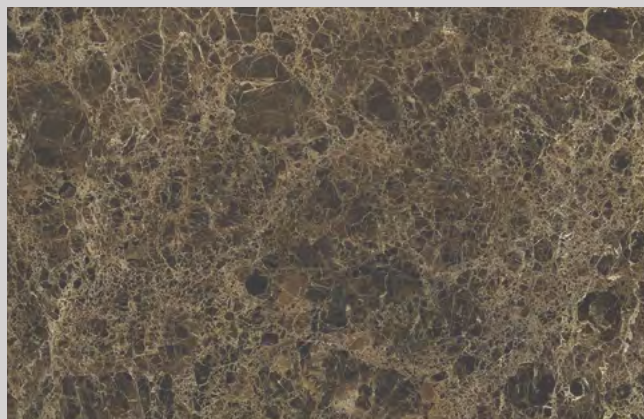


LNG Nero Greco

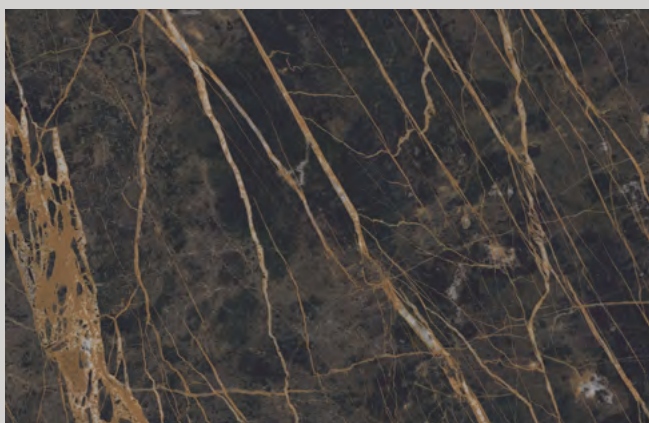
Porcelain stoneware



LIW Invisible White

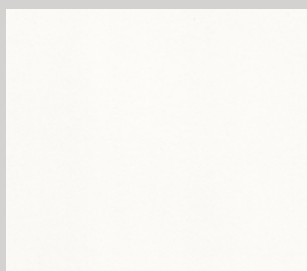


LEM Emperador Lucido

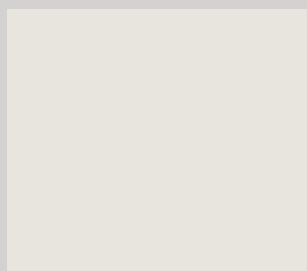


LND Noir Desir Lucido

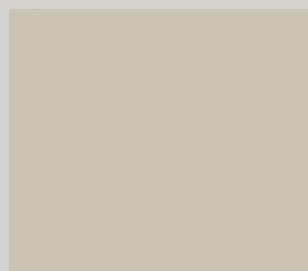
Matt lacquered



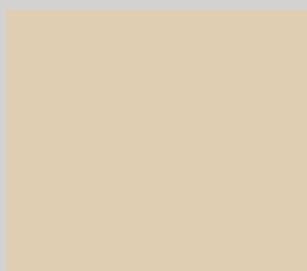
LB White



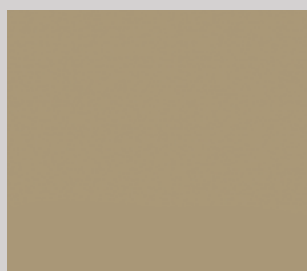
LL Grey White



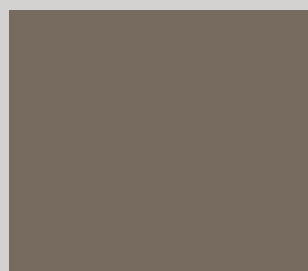
LS Silk Grey



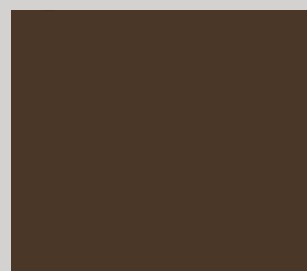
NK Light Beige



LE Beige



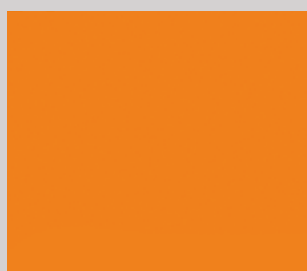
LT Beige Grey



NU Dark Brown



NW Ocher



LA Orange



NJ Burnt Orange



LH Flame Red



LR Purple Red



LI Black Red



LZ Sapphire Blue



NQ Cobalt Blue



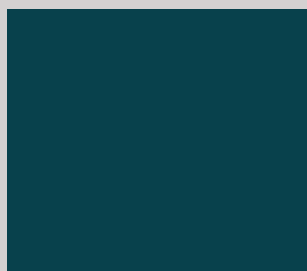
LC Pigeon Blue

NCS and RAL codes can be found at the end of this binder

Matt lacquered



The mark of responsible forestry



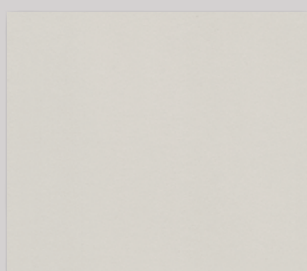
LD Ocean Blue



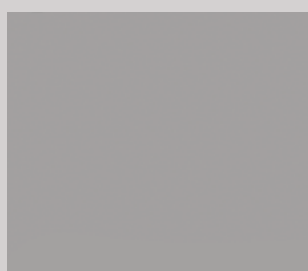
LP Pine Green



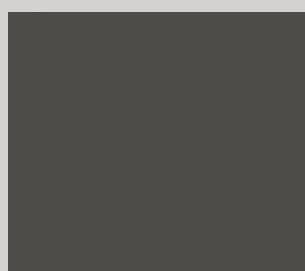
NV Olive Green



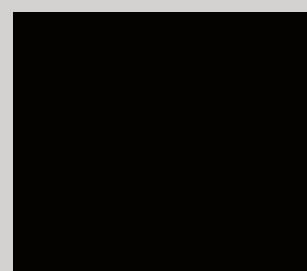
LF Telegrey 4



LG Grey



LO Umbra Grey



LN Traffic Black

NCS and RAL codes can be found at the end of this binder

Metal



I White



O Matt White



A Silver



R Umbra Grey



C Chrome

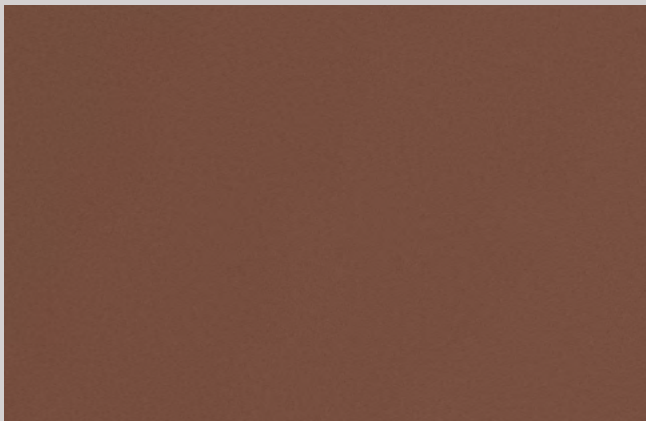
Trendy metal



OR Gold



BR Bronze



CO Corten

Solid ash wood



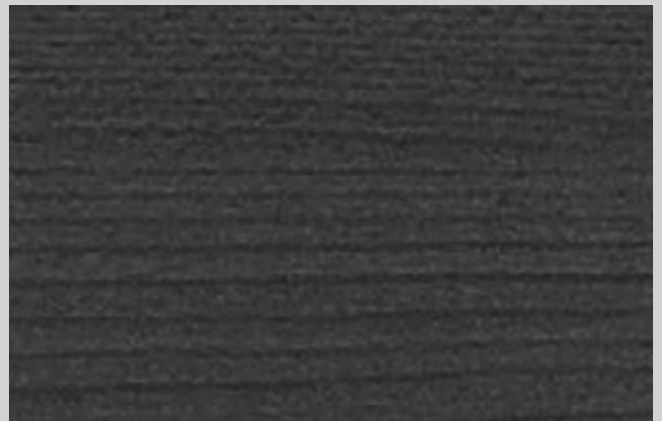
FK Oak varnished solid ash wood



FN Walnut varnished solid ash wood



FO Elm varnished solid ash wood



FG Umbra grey varnished solid ash wood

B01

Pugi.rg®

Fabric

100% polyester FR - Trevira CS

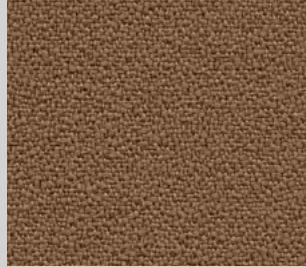
Martindale: 100.000 cycles ± 20%

Reaction to fire: EN 1021 Part 1-2 (UE), Classe 1 (IT), BS 5852 Crib 5 (UK), M1 (FR), B1 DIN 4102 (D), TB 117:2013 (USA)

OEKO-TEX®
CONFIDENCE IN TEXTILES
STANDARD 100



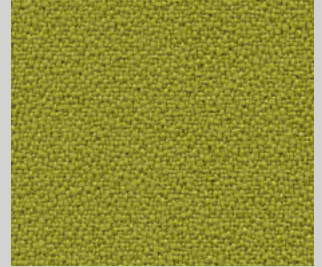
B01/009



B01/016



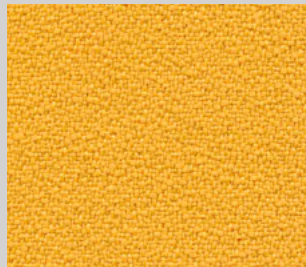
B01/027



B01/013



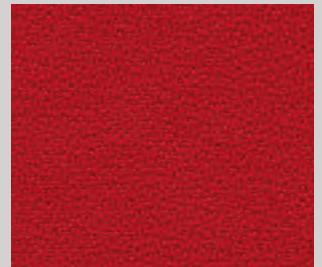
B01/011



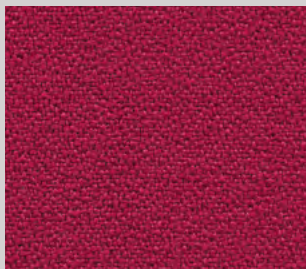
B01/010



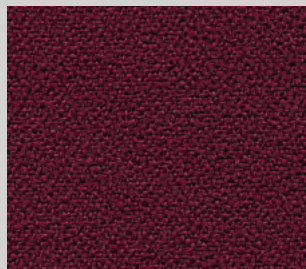
B01/017



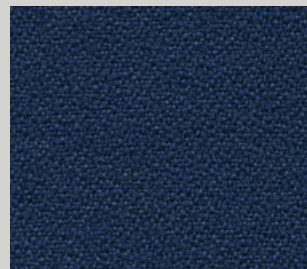
B01/018



B01/021



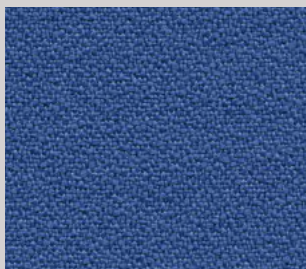
B01/024



B01/026



B01/023



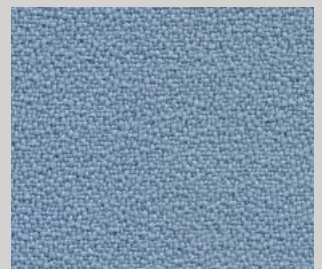
B01/025



B01/020



B01/019



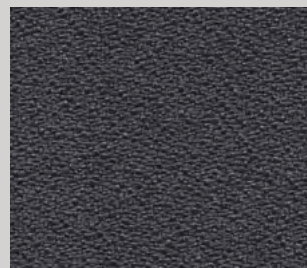
B01/014



B01/012



B01/015



B01/222



B01/028

Black

Slight differences between colour batches have to be considered normal

B03



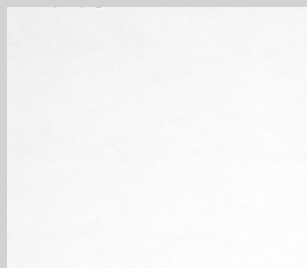
Simil leather

76% PVC - 2% polyurethane - 22% polyester

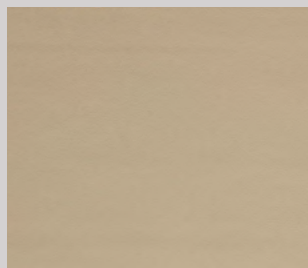
Martindale: 75.000 cycles

Reaction to fire: EN 1021 Part 1-2 (UE), Classe 1 IM (IT),

BS 5852-1:1979 Part I (UK), TB 117:2013 (USA)



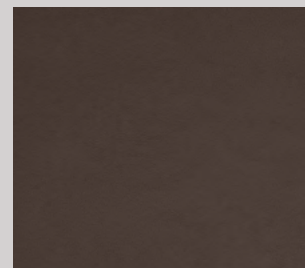
B03/141



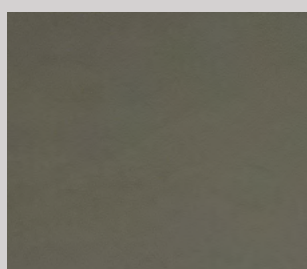
B03/181



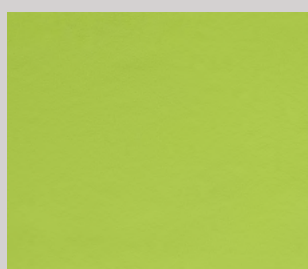
B03/185



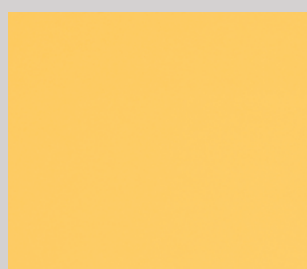
B03/183



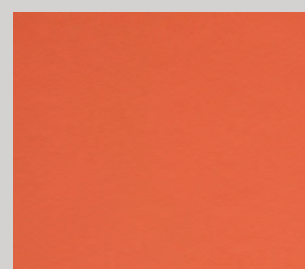
B03/177



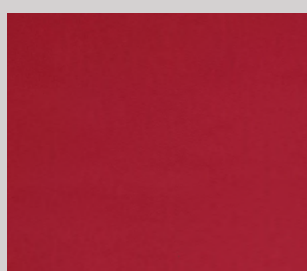
B03/175



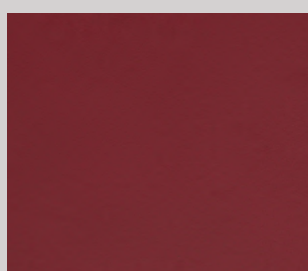
B03/169



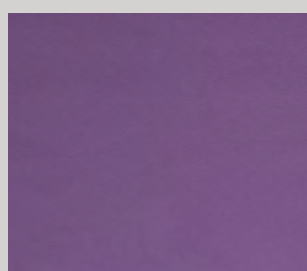
B03/176



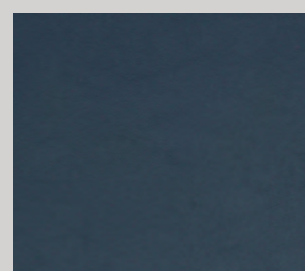
B03/179



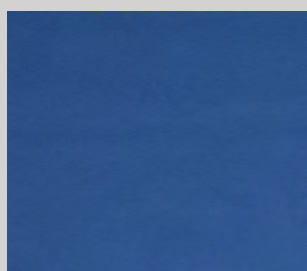
B03/186



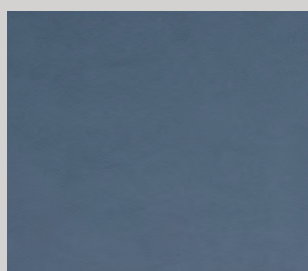
B03/187



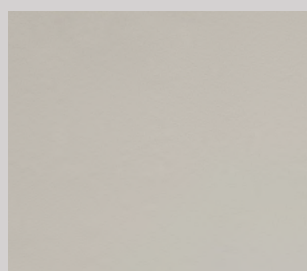
B03/180



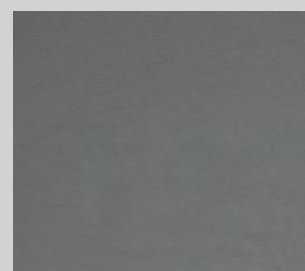
B03/182



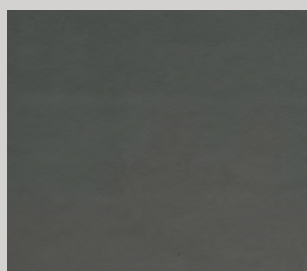
B03/178



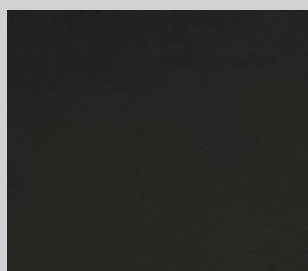
B03/170



B03/137



B03/184



B03/138

Black

Slight differences between colour batches have to be considered normal

C01

Pugi.rg®

Fabric

100% polyester FR - Trevira CS

Martindale: 70.000 cycles ± 20%

Reaction to fire: EN 1021 Part 1-2 (UE), Classe 1 (IT), M1 (FR),
BS 5852 Crib 5 (UK), B1 DIN 4102 (D), TB 117:2013 (USA)

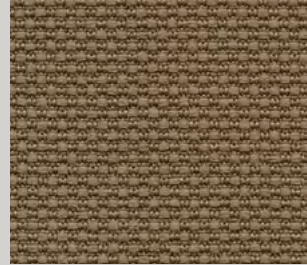
OEKO-TEX®
CONFIDENCE IN TEXTILES
STANDARD 100



C01/057



C01/058



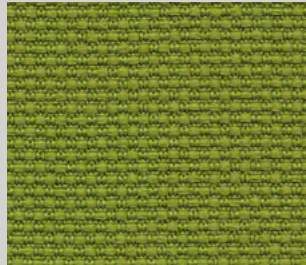
C01/060



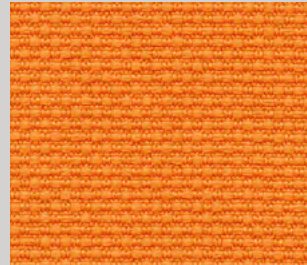
C01/061



C01/059



C01/056



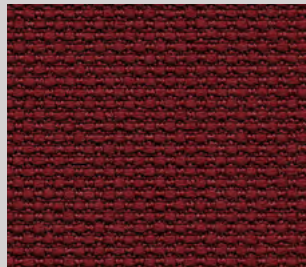
C01/049



C01/048



C01/050



C01/051



C01/055



C01/054



C01/053



C01/052



C01/063



C01/062



C01/064 Black

Slight differences between colour batches have to be considered normal

C05

Gabriel®

Fabric

100% polyester FR - Trevira CS

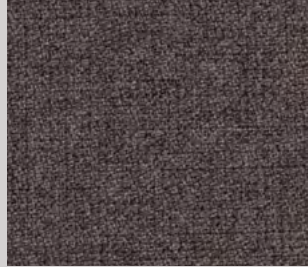
Martindale: 100.000 cycles

Reaction to fire: EN 1021 Part 1-2 (UE) M1 (FR), BS 5852 Crib 5 (UK),
Classe 1 (IT), B1 DIN 4102 (D), TB 117:2013 (USA)

OEKO-TEX®
CONFIDENCE IN TEXTILES
STANDARD 100



C05/280



C05/281



C05/285



C05/287



C05/303



C05/295



C05/302



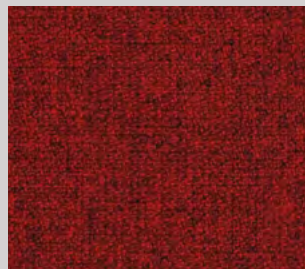
C05/282



C05/284



C05/286



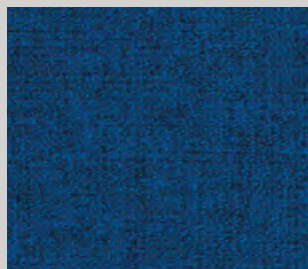
C05/289



C05/288



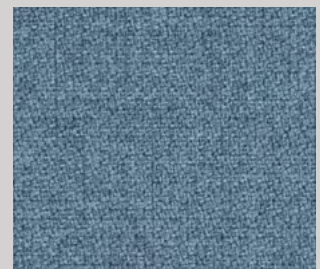
C05/294



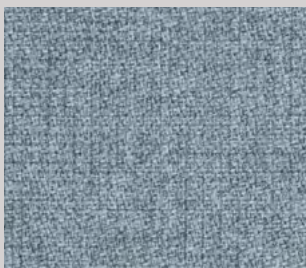
C05/292



C05/293



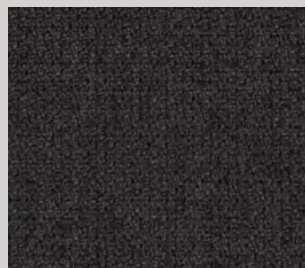
C05/290



C05/291



C05/279



C05/283

Slight differences between colour batches have to be considered normal

D06

SPRADLING®

Simil leather

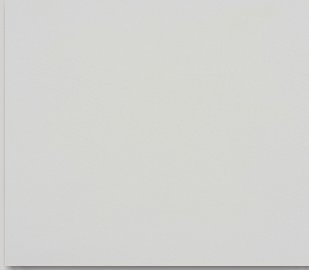
PVC & polyester

Martindale: >300,000 cycles

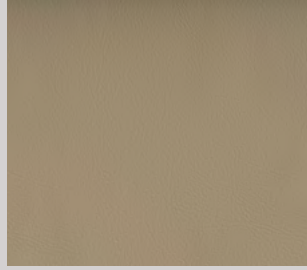
Reaction to fire: EN 1021 Part 1-2 (UE), Classe 1 (IT), M1 (FR),
BS 5852 Crib 5 (UK), B1 DIN 4102 (D), TB 117:2013 (USA)



PERMABLOK3®



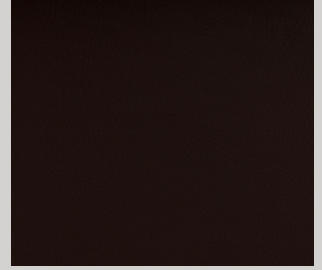
D06/495



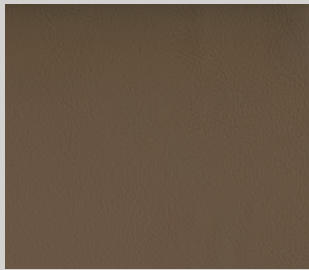
D06/496



D06/497



D06/505



D06/498



D06/506



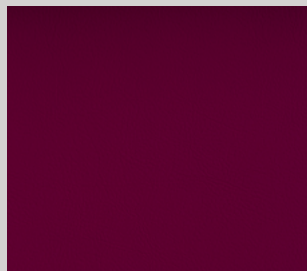
D06/512



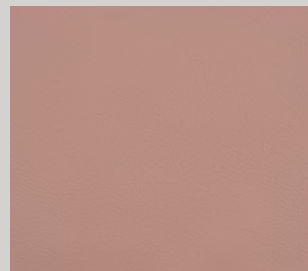
D06/514



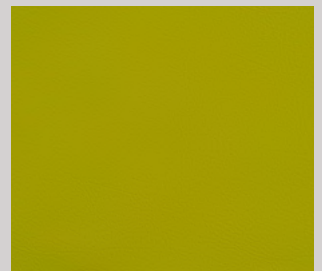
D06/511



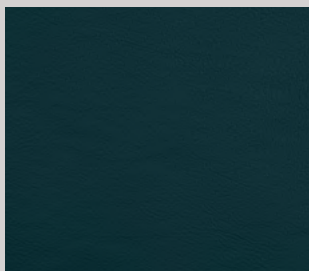
D06/513



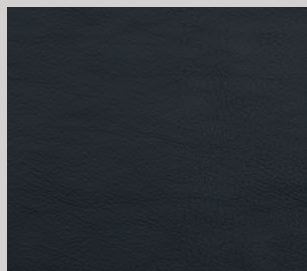
D06/503



D06/509



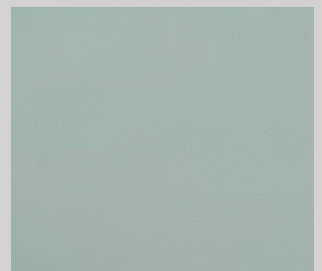
D06/507



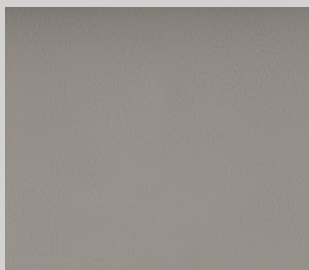
D06/508



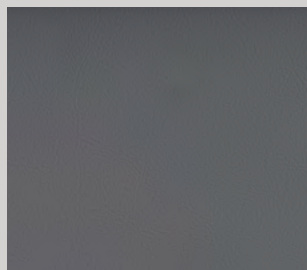
D06/510



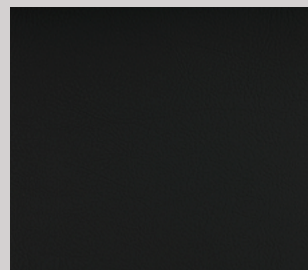
D06/504



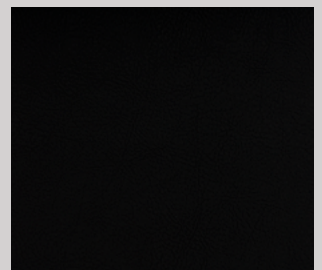
D06/499



D06/500



D06/501



D06/502

Slight differences between colour batches have to be considered normal

P01

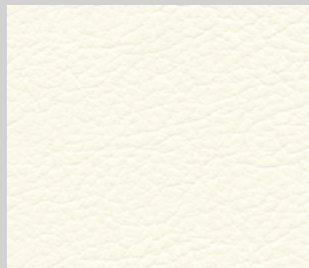
GIVIPPELL

Leather

Animal origin: European raw hides

Chrome tanning, aniline dyeing, water pigments finishing.

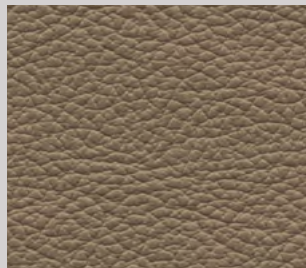
Reaction to fire: EN 1021 Part 1-2 (UE), TB 117:2013 (USA)



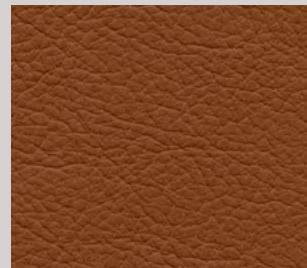
P01/093



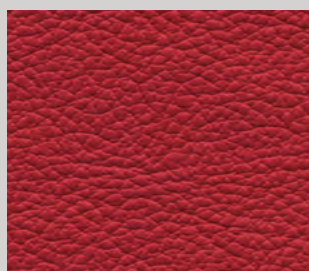
P01/098



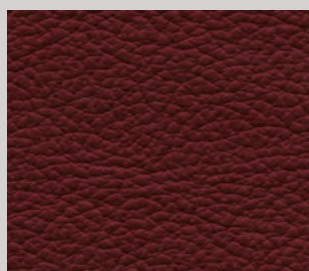
P01/296



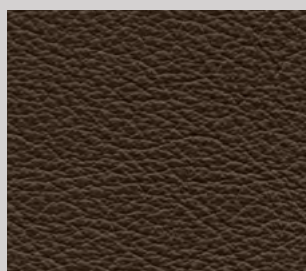
P01/096



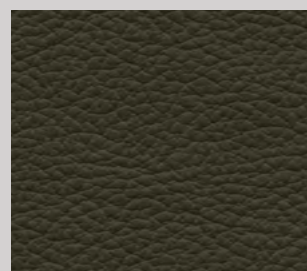
P01/097



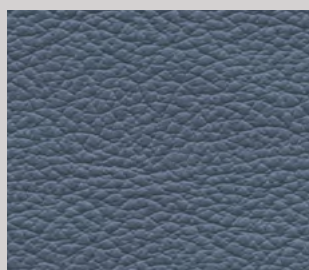
P01/257



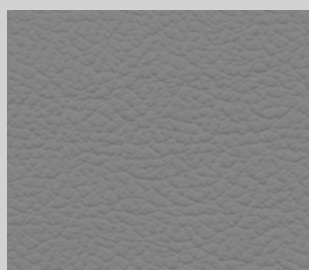
P01/095



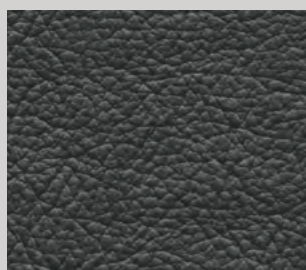
P01/627



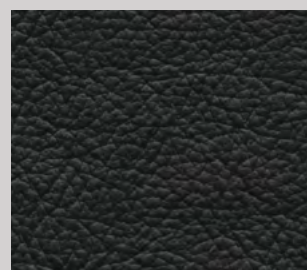
P01/626



P01/145



P01/172



P01/092

Black

Markings such as scars and wrinkles are genuine proof of the natural origin of our leather.
Slight differences between colour batches have to be considered normal

D02

Pugi.rg®

Fabric

100% polyester FR - Trevira CS

Martindale: 100.000 cycles ± 20%

Reaction to fire: EN 1021 Part 1-2 (UE), M1 (FR), BS 5852 Crib 5 (UK),
Classe 1 (IT), B1 DIN 4102 (D), TB 117:2013 (USA)

OEKO-TEX®
CONFIDENCE IN TEXTILES
STANDARD 100



D02/268



D02/271



D02/276



D02/278



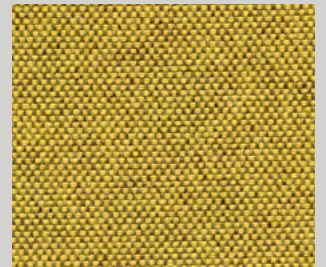
D02/326



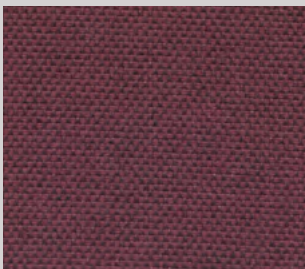
D02/269



D02/341



D02/267



D02/277



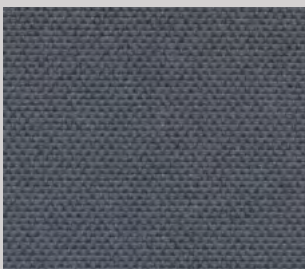
D02/274



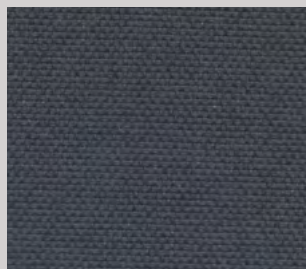
D02/272



D02/270



D02/273



D02/275

Slight differences between colour batches have to be considered normal

D03

 Pugi.rg®

Fabric

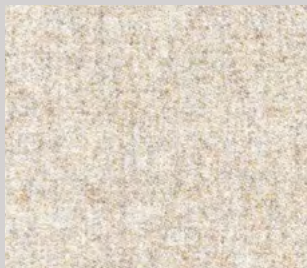
75% wool - 25% polyester

Martindale: 100.000 cycles ± 20%

Reaction to fire: EN 1021 Part 1-2 (UE), M1 (FR), BS 5852 Crib 5 (UK),

Classe 1 (IT), TB 117:2013 (USA)

OEKO-TEX®
CONFIDENCE IN TEXTILES
STANDARD 100



D03/363



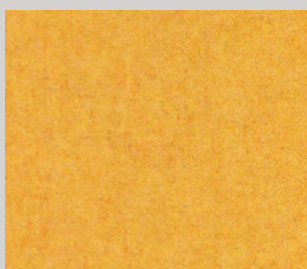
D03/375



D03/370



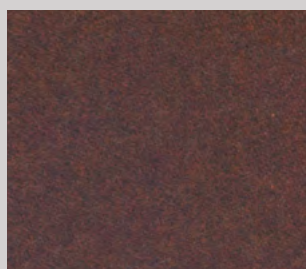
D03/367



D03/365



D03/372



D03/377



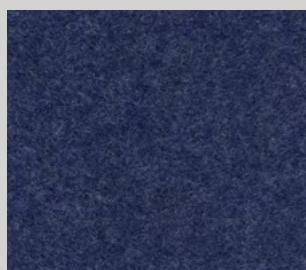
D03/381



D03/378



D03/366



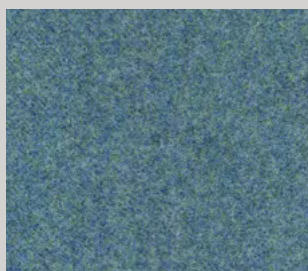
D03/380



D03/369



D03/373



D03/368



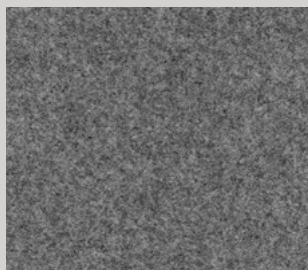
D03/371



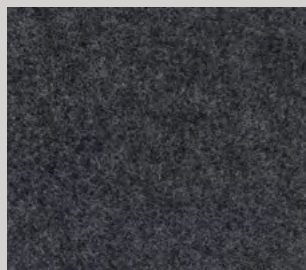
D03/364



D03/374



D03/376



D03/379

Slight differences between colour batches have to be considered normal

D04

abitex

Fabric

68% polyester - 32% polypropylene

Martindale: >135.000 cycles

Reaction to fire: EN 1021 Part 1-2 (UE), M1 (FR), Classe 1 (IT),
B1 DIN 4102 (D), TB 117:2013 (USA)



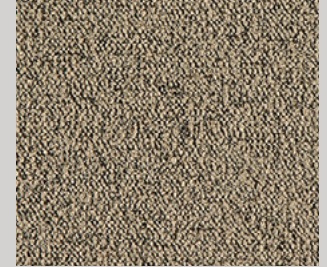
D04/382



D04/400



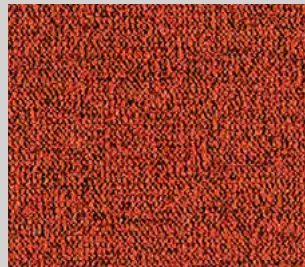
D04/383



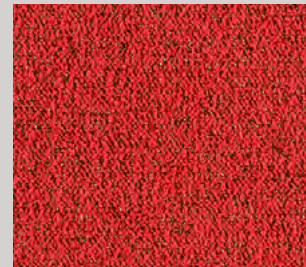
D04/384



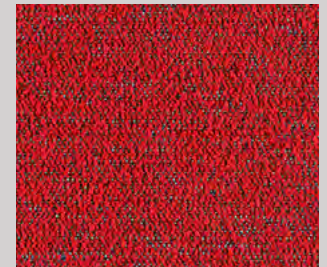
D04/387



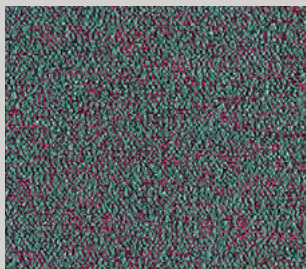
D04/392



D04/390



D04/396



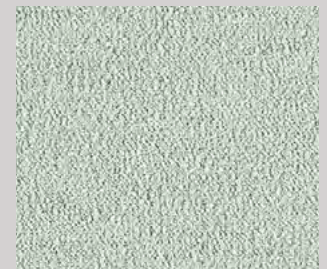
D04/399



D04/398



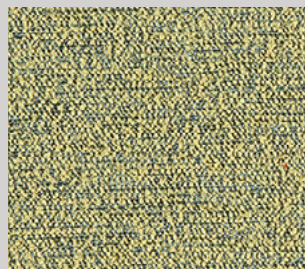
D04/397



D04/401



D04/389



D04/391



D04/395



D04/394



D04/393



D04/385



D04/386



D04/388

Slight differences between colour batches have to be considered normal

D05

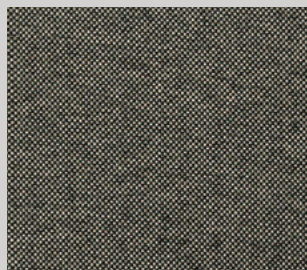
camira

Fabric

100% REPREVE® recycled polyester made from used plastic bottles

Martindale: ≥80.000 cycles

Reaction to fire: EN 1021 Part 1-2 (UE), BS 7176 Low and Medium Hazard (UK),
NFPA 260 + UFAC Class1 (USA), TB 117:2013 (USA)



D05/413



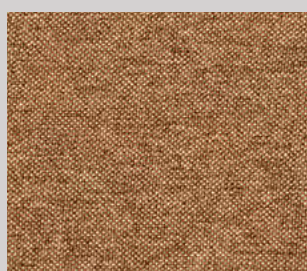
D05/407



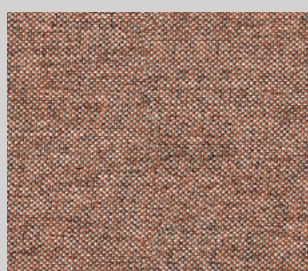
D05/404



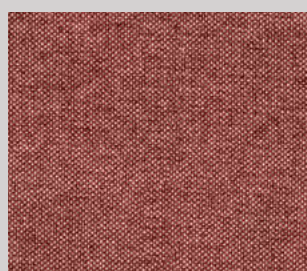
D05/405



D05/406



D05/402



D05/403



D05/409



D05/415



D05/412



D05/408



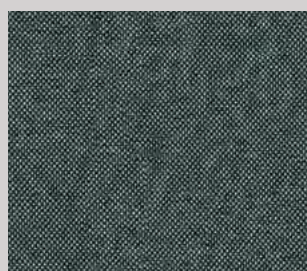
D05/410



D05/411



D05/414



D05/416

Slight differences between colour batches have to be considered normal

E01

Gabriel

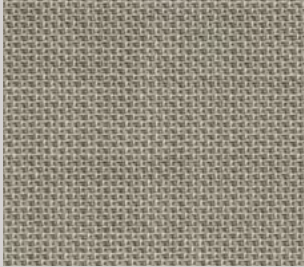
Fabric

85% New Zealand wool - 15% polyamide

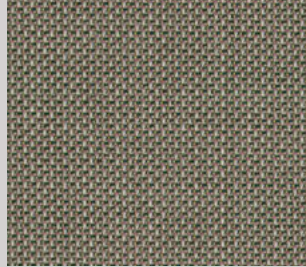
Martindale: 200.000 cycles

Reaction to fire: EN 1021 Part 1-2 (UE), M1 (FR), BS 5852 Crib 5 (UK),
TB 117:2013 (USA)

OEKO-TEX®
CONFIDENCE IN TEXTILES
STANDARD 100



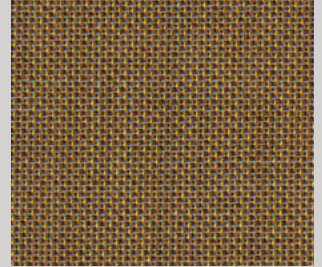
E01/417



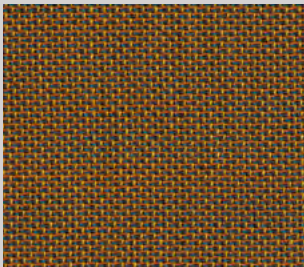
E01/427



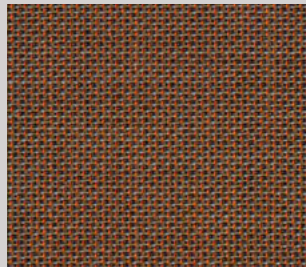
E01/418



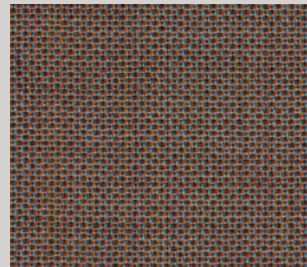
E01/419



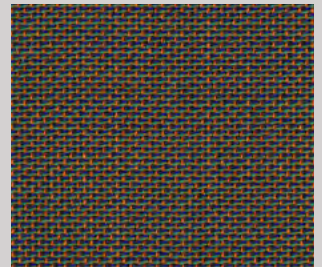
E01/422



E01/424



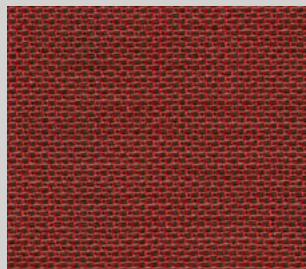
E01/428



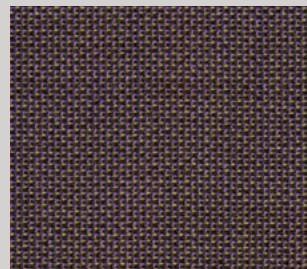
E01/435



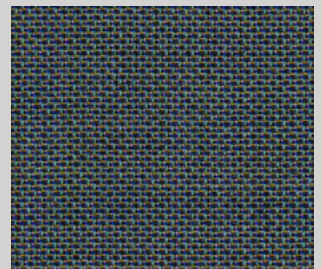
E01/425



E01/423



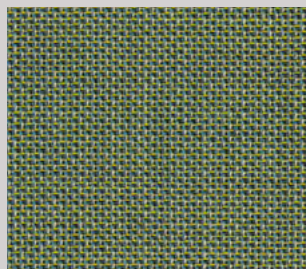
E01/426



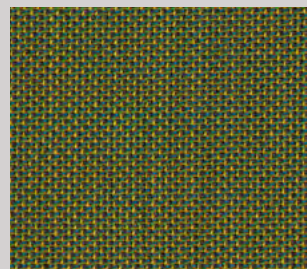
E01/429



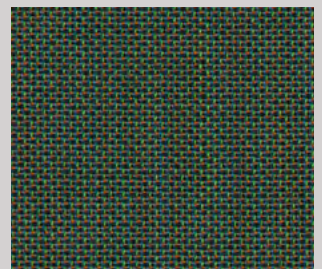
E01/430



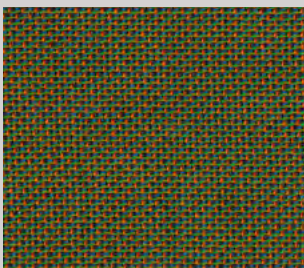
E01/431



E01/432



E01/433



E01/434



E01/421



E01/420

Slight differences between colour batches have to be considered normal

E02

Gabriel

Fabric

85% New Zealand wool - 15% polyamide

Martindale: 200.000 cycles

Reaction to fire: EN 1021 Part 1-2 (UE), M1 (FR), BS 5852 part 1 (UK),
Classe 1 (IT), TB 117:2013 (USA)

OEKO-TEX®
CONFIDENCE IN TEXTILES
STANDARD 100



E02/438



E02/439



E02/440



E02/441



E02/454



E02/453



E02/442



E02/443



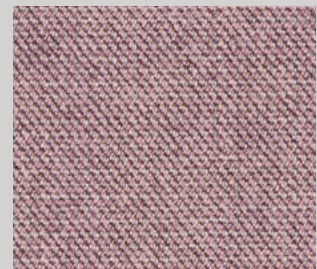
E02/444



E02/445



E02/446



E02/447



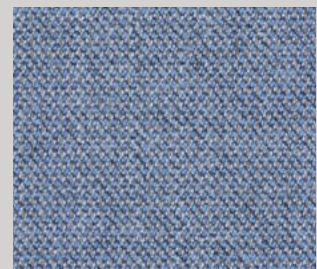
E02/448



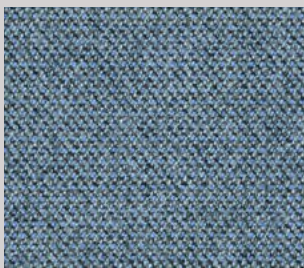
E02/449



E02/450



E02/451



E02/452



E02/436



E02/437

The thread design, the process of waving warp and weft different colored natural fiber yarns might cause localized irregularities that make up the natural appearance of the fabric. Slight differences between colour batches have to be considered normal.

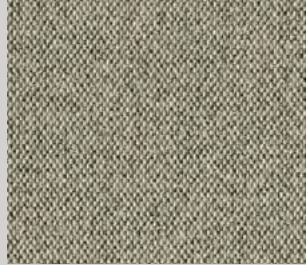
E03

camira

Fabric
75% pure new wool - 25% flax
Wyzenbeek: >100.000 double rubs
Reaction to fire: BS 7176 Low Hazard (UK), TB 117:2013 (USA)



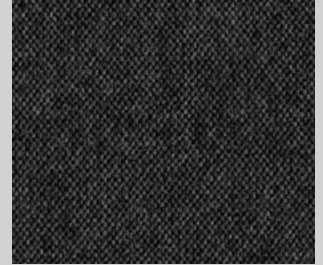
E03/464



E03/460



E03/463



E03/472



E03/470



E03/458



E03/455



E03/462



E03/459



E03/457



E03/456



E03/461



E03/466



E03/471



E03/474



E03/469



E03/468



E03/473



E03/467



E03/465

Slight differences between colour batches have to be considered normal

E04

abitex

Fabric

100% polyester

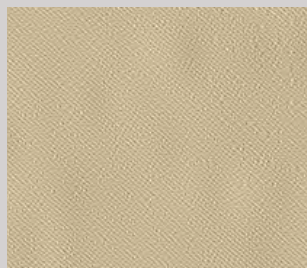
Martindale: 150.000 cycles

Reaction to fire: EN 1021 Part 1-2 (UE), M1 (FR), BS 5852 Crib 5 (UK),

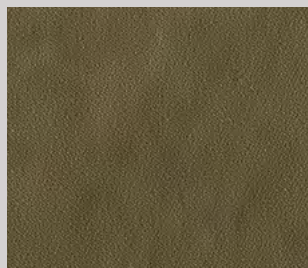
Classe 1 (IT), TB 117:2013 (USA)



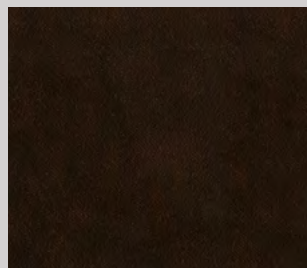
Suggested for Design Living collection



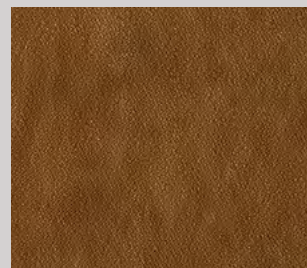
E04/475



E04/480



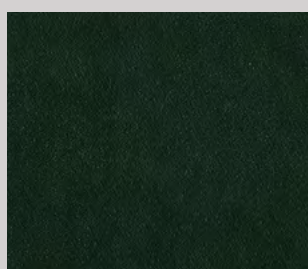
E04/477



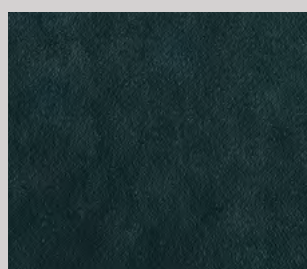
E04/476



E04/481



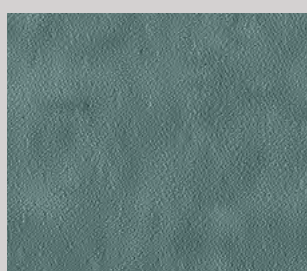
E04/482



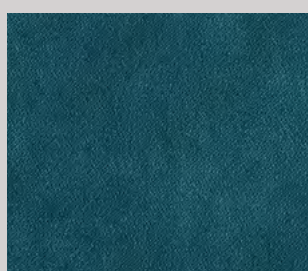
E04/483



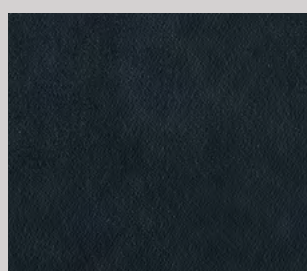
E04/492



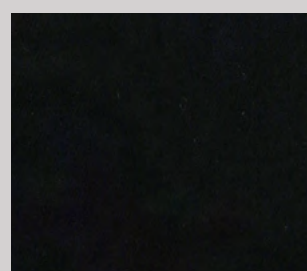
E04/491



E04/484



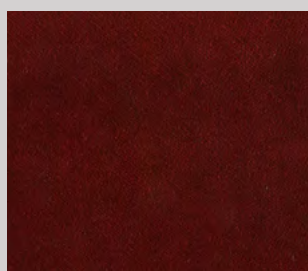
E04/487



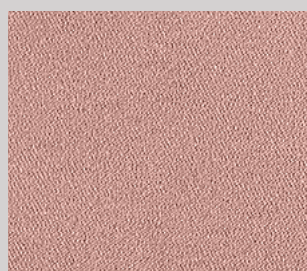
E04/485



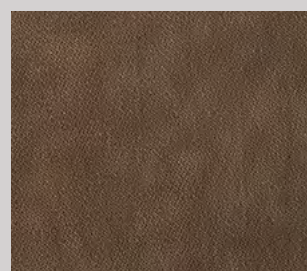
E04/478



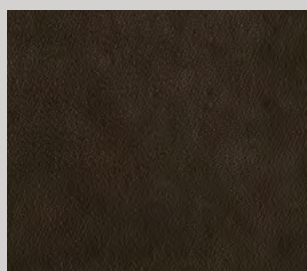
E04/479



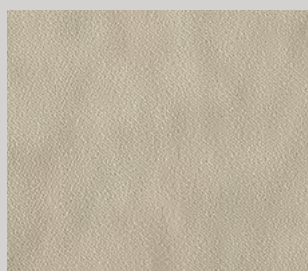
E04/488



E04/489



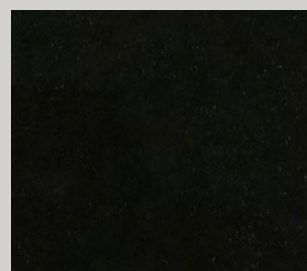
E04/486



E04/490



E04/493



E04/494

Black

Slight differences between colour batches have to be considered normal

I01

RUBELLI

Fabric
100% polyester
Martindale: 50.000 cycles
Reaction to fire: M1 (FR), BS 5851 Part 0-1 (UK), TB 117:2013 (USA),
Classe 1 (IT)

OEKO-TEX®
CONFIDENCE IN TEXTILES
STANDARD 100



I01/515



I01/516



I01/517



I01/532



I01/524



I01/525



I01/521



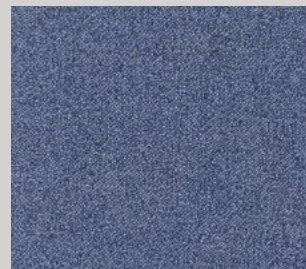
I01/530



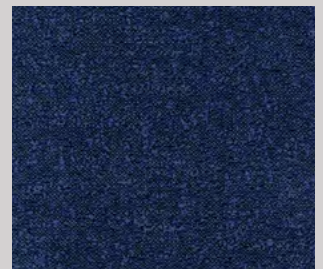
I01/531



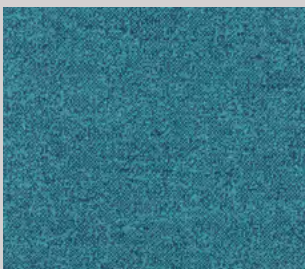
I01/523



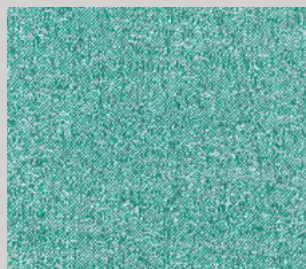
I01/529



I01/528



I01/527



I01/526



I01/518



I01/522



I01/520



I01/519

Suggested for Design Living collection

Slight differences between colour batches have to be considered normal

I02

kvadrat

Fabric

92% new wool worsted - 8% nylon

Martindale: 60.000 cycles

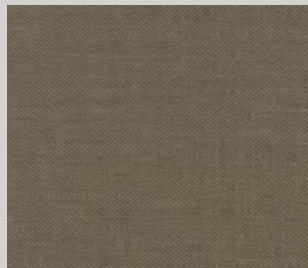
Reaction to fire: BS 5852 Crib 5 (UK), ND D 60 013 (FR), Classe 1 (IT), EN 1021 Part 1-2 (UE), TB 117:2013 (USA)



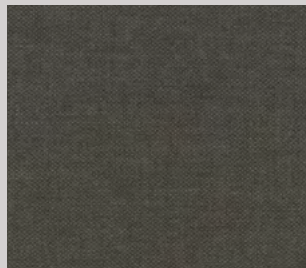
Suggested for Design Living collection



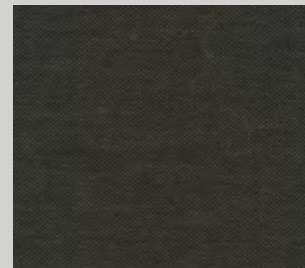
I02/547



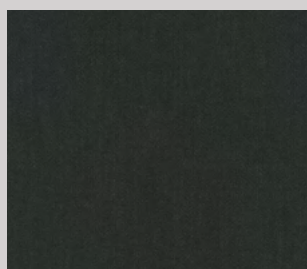
I02/549



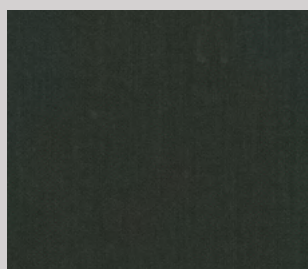
I02/550



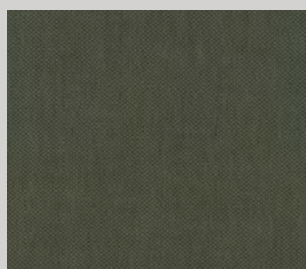
I02/552



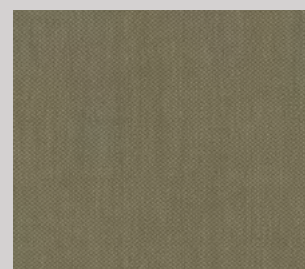
I02/541



I02/542



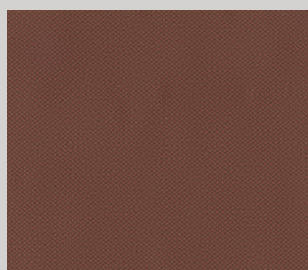
I02/537



I02/539



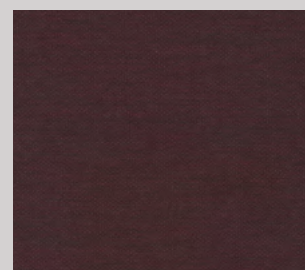
I02/533



I02/543



I02/546



I02/551



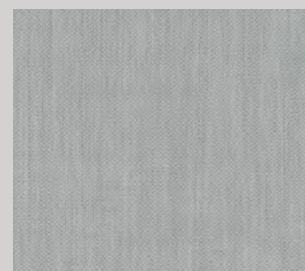
I02/545



I02/544



I02/534



I02/535



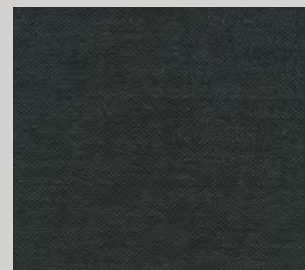
I02/536



I02/548



I02/538



I02/540

Slight differences between colour batches have to be considered normal

M01

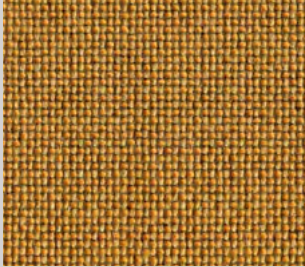
camira

Fabric

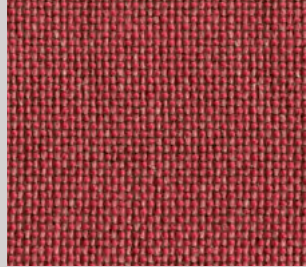
85% wool - 10% flax - 5% nylon

Martindale: > 100.000 cycles

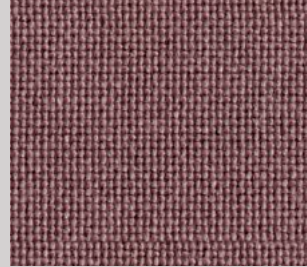
Reaction to fire: BS 7176 Medium Hazard (UK), TB 117:2013 (USA)



M01/559



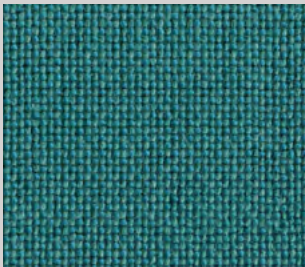
M01/562



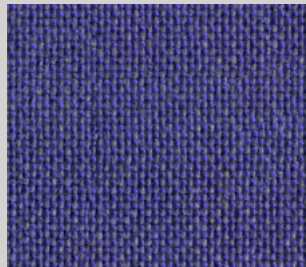
M01/565



M01/560



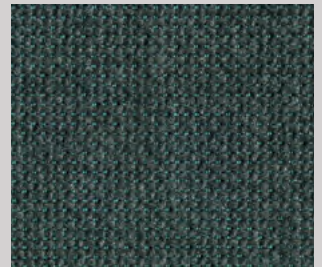
M01/563



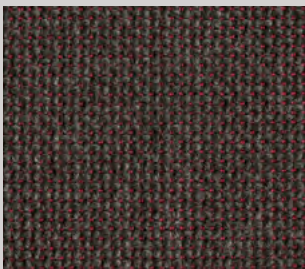
M01/566



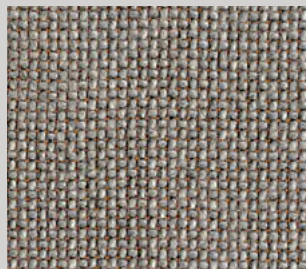
M01/561



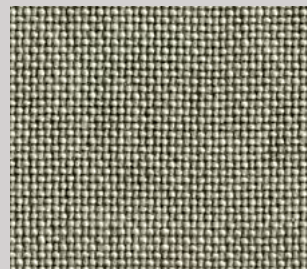
M01/564



M01/567



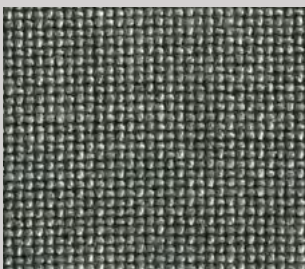
M01/553



M01/556



M01/554



M01/555



M01/557



M01/558

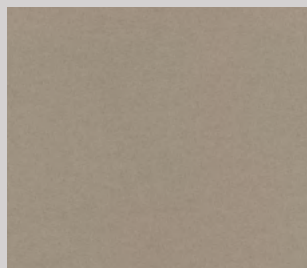
M02

kvadrat

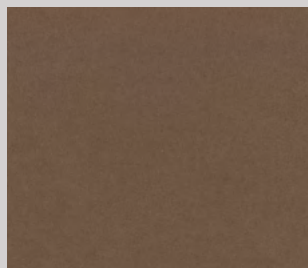
Fabric
100% wool
Martindale: 45.000 cycles
Reaction to fire: BS 5852 Crib 5 (UK), ND D 60 013 (FR), Classe 1 (IT),
EN 1021 Part 1-2 (UE), TB 117:2013 (USA)



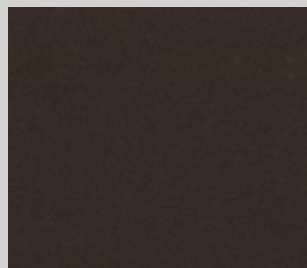
Suggested for Design Living collection



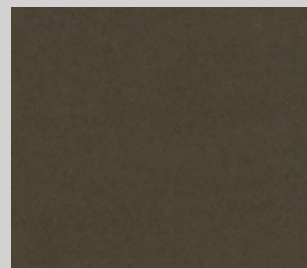
M02/573



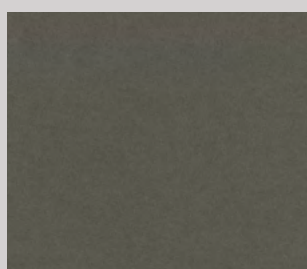
M02/574



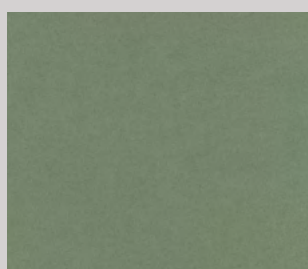
M02/572



M02/583



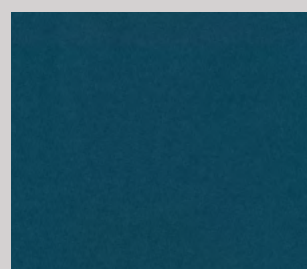
M02/582



M02/584



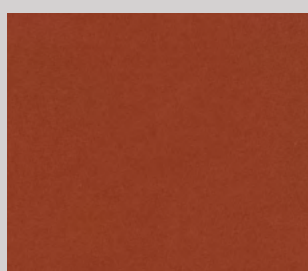
M02/586



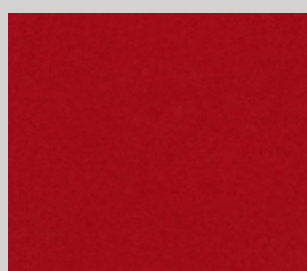
M02/587



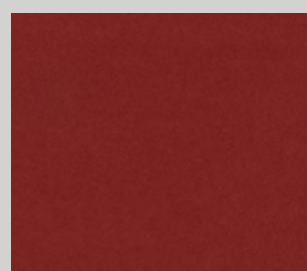
M02/575



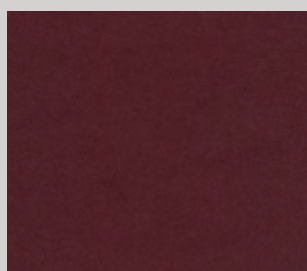
M02/579



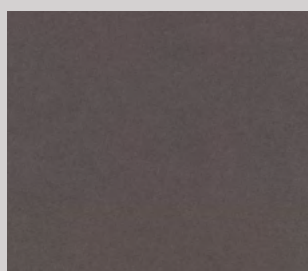
M02/576



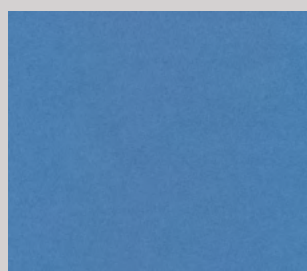
M02/578



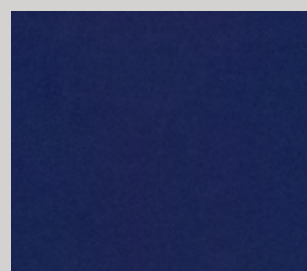
M02/577



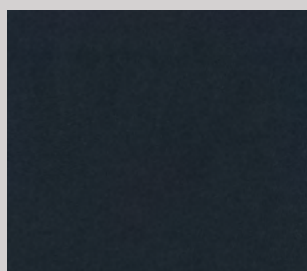
M02/568



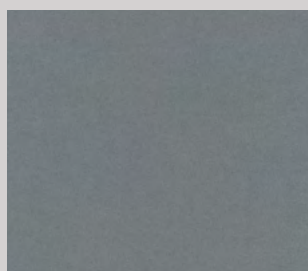
M02/580



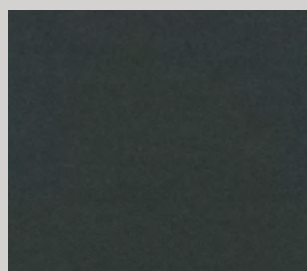
M02/581



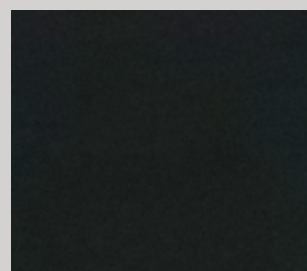
M02/585



M02/569



M02/571



M02/570

Black

Slight differences between colour batches have to be considered normal

M03

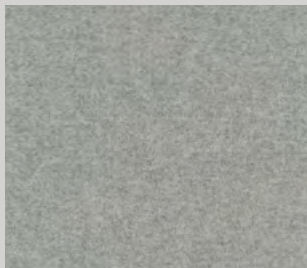
kvadrat

Fabric

100% wool

Martindale: 45.000 cycles

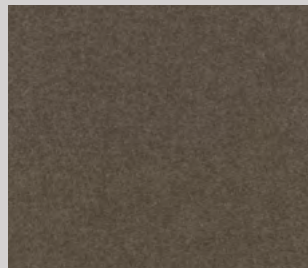
Reaction to fire: BS 5852 Crib 5 (UK), ND D 60 013 (FR), Classe 1 (IT),
EN 1021 Part 1-2 (UE), TB 117:2013 (USA)



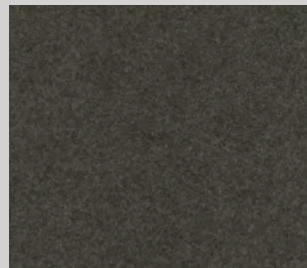
M03/589



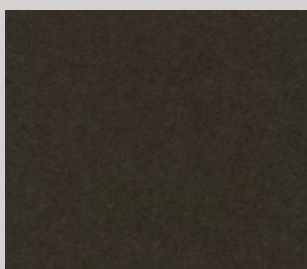
M03/588



M03/602



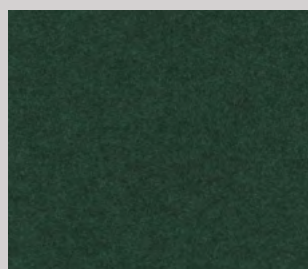
M03/603



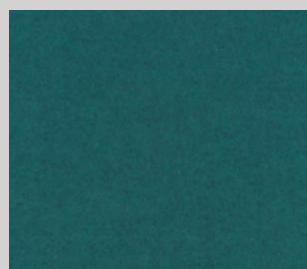
M03/604



M03/597



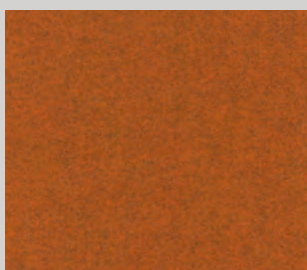
M03/600



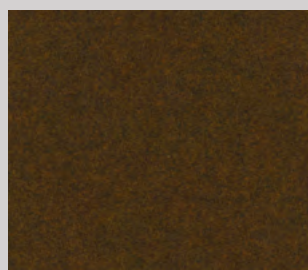
M03/596



M03/601



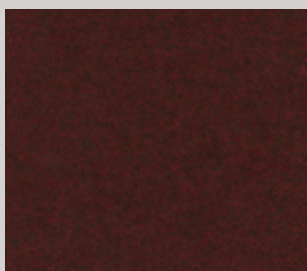
M03/593



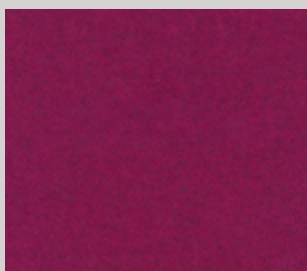
M03/594



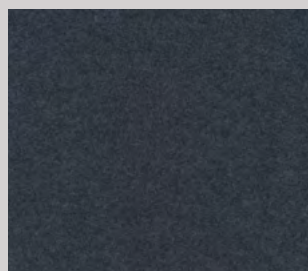
M03/606



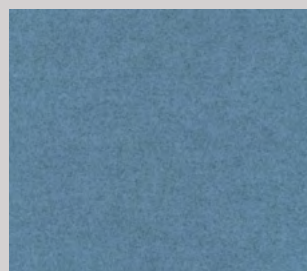
M03/607



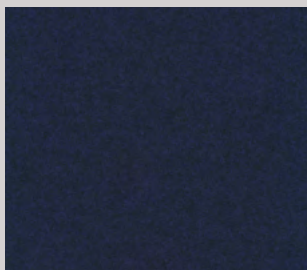
M03/605



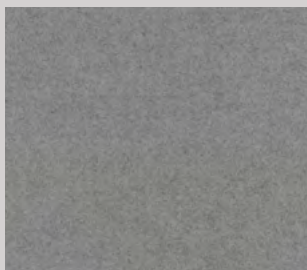
M03/595



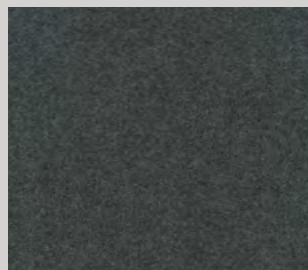
M03/598



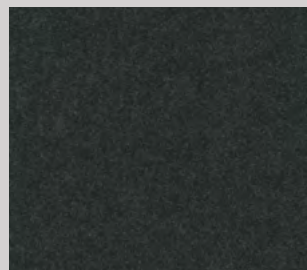
M03/599



M03/590



M03/591



M03/592

Suggested for Design Living collection

Slight differences between colour batches have to be considered normal

R02

Dekora mesh
70% polyvinyl
30% polyester



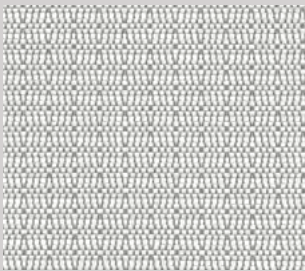
R02/101



R02/102

R05

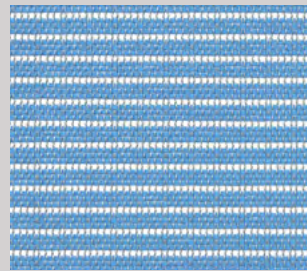
Dinamica mesh
30% polyester
70% elastomerized nylon



R05/148



R05/150



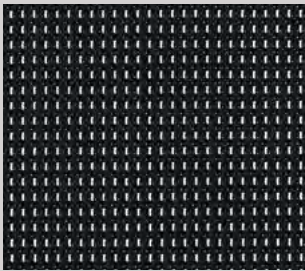
R05/151



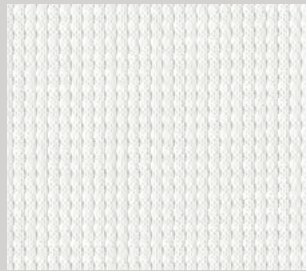
R05/153

R06

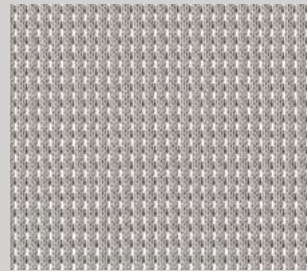
Oxygen & Omnia mesh
100% polyester



R06/229



R06/230

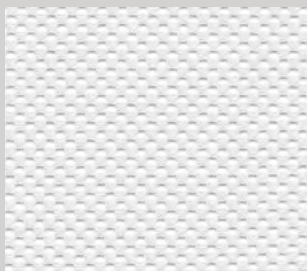


R06/231

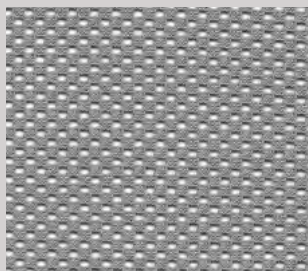
Slight differences between colour batches have to be considered normal

R07

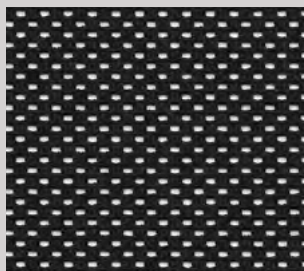
Okay mesh
100% polyester



R07/253



R07/251



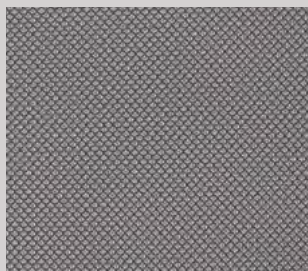
R07/250

R09

Diade Rock mesh
100% polyester



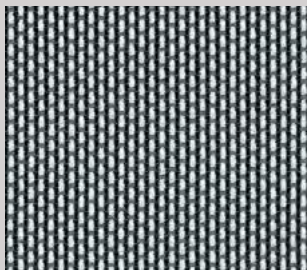
R09/360



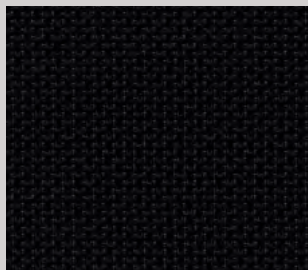
R09/361

R10

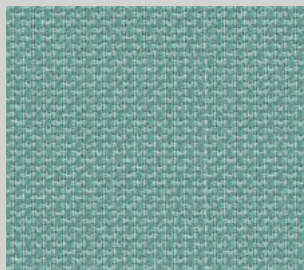
Ode mesh
68% polyester
32% polyamid



R10/622



R10/623

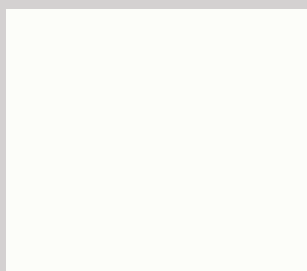


R10/624



R10/625

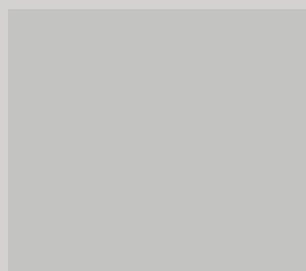
Polymers



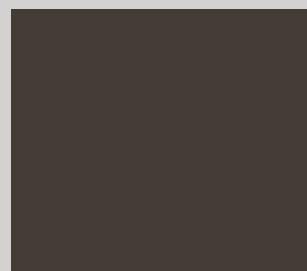
BA White



BG Beige



GR Grey



GO Umbra Grey



OC Ocher



AB Burnt Orange



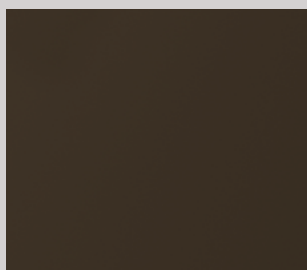
VD Olive Green



BT Cobalt Blue



TM Dark Brown



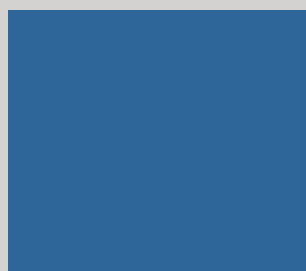
RN Bronze



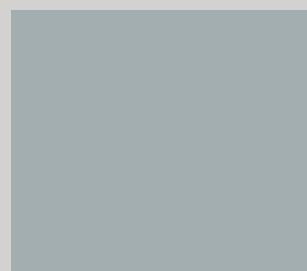
OZ Ocher Cell



RZ Red Cell



LZ Blue Cell



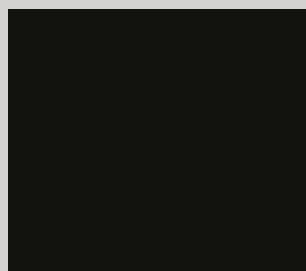
IZ Grey Cell



RY Red Close



IY Grey Close



NR Black



