

## Finiture/Finishes/Finitions/Ausführungen

FINITURE METALLO/METAL FINISHES/FINITIONS MÉTAL/METALLISCHE AUSFÜHRUNGEN

### Mainstream AkzoNobel

					
<b>V1</b> S711 (RAL 9010) Pure white	<b>V4</b> S708 (RAL 9010) Pure white textured finish	<b>V39</b> S742 White Blackboard	<b>V3</b> 7035 (RAL 7035) Light grey	<b>V31</b> S125 (RAL 7047) Telegrey 4	<b>V63</b> S254 (RAL 7047) Telegrey 4 textured finish
					
<b>V38</b> S823 (RAL 9004) Black	<b>V26</b> S885 (RAL 9005) Matt black	<b>V22</b> S811 (RAL 9005) Jet black	<b>V40</b> S817 (RAL 9005) Black textured finish	<b>V19</b> S210 (RAL 7021) Black grey	<b>V62</b> S171 (RAL 7021) Black grey textured finish
					
<b>V12</b> Aisi 304 Inox	<b>V64</b> Aluminium pole	<b>V6</b> S380 (RAL 9006) White aluminium	<b>V7</b> S737 (RAL 7037) Dusty grey textured finish	<b>V51</b> S168 Grey 2900	<b>V53</b> S190 Medium Grey
					
<b>VN6</b> S132 Otago	<b>V2</b> 7044 (RAL 7044) Silk grey	<b>VN3</b> S098 Gris 2800 sablé	<b>V44</b> S196 (RAL 7039) Quartz grey	<b>V10</b> S739 (RAL 7039) Quartz grey textured finish	<b>VN1</b> S112 Steel Bronze
					
<b>V52</b> S392 Gris Met Smooth	<b>V9</b> S097 (RAL 9007) Semigloss grey aluminium	<b>VN2</b> S130 (RAL 9007) Matt grey aluminium	<b>V32</b> S126 (RAL 7036) Platinum grey	<b>V16</b> S051 Manganese	<b>V55</b> S074 (RAL 7016) Anthracite grey textured finish
					
<b>VN4</b> S329 Atlante Blue	<b>V23</b> S084 (RAL 5003) Sapphire blue	<b>V61</b> S340 (RAL 5003) Sapphire blue textured finish	<b>V56</b> (RAL 6026) Opal green	<b>V42</b> S339 (RAL 5020) Ocean blue	<b>V13</b> S123 (RAL 7016) Anthracite grey
					
<b>VN5</b> S131 Pompadour blue	<b>V17</b> S024 (RAL 5024) Pastel blue	<b>V41</b> S513 (RAL 5019) Capri blue	<b>V27</b> SA04 (RAL 5010) Gentian blue	<b>V20</b> S328 (RAL 5002) Ultramarine blue	<b>V36</b> S327 (RAL 5011) Steel blue

## Finiture/Finishes/Finitions/Ausführungen

FINITURE METALLO/METAL FINISHES/FINITIONS MÉTAL/METALLISCHE AUSFÜHRUNGEN

### Mainstream AkzoNobel

					
<b>V15</b> 1021 (RAL 1021) Rape yellow	<b>V28</b> SA01 (RAL 1003) Signal yellow	<b>V25</b> S107 (RAL 1006) Maize yellow	<b>V33</b> S143 (RAL 1005) Honey yellow	<b>V37</b> S144 (RAL 1027) Curry	<b>V50</b> S868 (RAL8001) Ochre brown
					
<b>V18</b> S029 (RAL 2008) Bright red orange	<b>V29</b> S918 (RAL 2004) Pure orange	<b>V48</b> S288 (RAL 3017) Rose	<b>V21</b> S293 (RAL 3020) Traffic red	<b>V30</b> SA03 (RAL 3001) Signal red	<b>V24</b> S005 (RAL 3005) Wine red
					
<b>V65</b> (RAL 2002) Vermilion	<b>V47</b> S292 (RAL 3012) Beige red	<b>V34</b> S289 Sablé pink	<b>V43</b> S306 (RAL 3013) Tomato red	<b>V46</b> S859 (RAL 8004) Copper brown	<b>V5</b> S862 (RAL 8025) Pale brown
					
<b>V49</b> S594 (RAL 6033) Mint turquoise	<b>V59</b> S167 (RAL 7033) Cement grey	<b>V14</b> S024 (RAL 6018) Yellow green	<b>V11</b> S598 (RAL 6001) Emerald green	<b>V8</b> 6013 (RAL 6013) Reed green	<b>V35</b> S188 (RAL 6003) Olive green

# Finiture/Finishes/Finitions/Ausführungen

FINITURE METALLO/METAL FINISHES/FINITIONS MÉTAL/METALLISCHE AUSFÜHRUNGEN

## Tables & Screen

T– Share  
Struttura/Frame/Piètement/Gestell  
**V1, V16, V26**  
Canalina/Cable duct/Goulotte pour câblage  
/Kabelwanne  
**V1, V25, V26**

Supporti magnetici per pannello acustico  
/End brackets for acoustic panel  
/Magnetic supports pour panneau insonorisant  
/Endtragehaken für Schalldämpfungspaneel  
**V1, V25, V26**

Franny  
Struttura/Frame/Piètement/Gestell  
**V35, V36, V37, V38, V46**  
Piano/Piano/Piano/Piano  
**V47, V58, V59, V60**

Agreste  
Struttura/Frame/Piètement/Gestell  
**V4, V16, V24, V11**

## Dynamic partitions

Dolomites  
Struttura/Frame/Piètement/Gestell  
**V13, V1, V44, V41, V42, V43, V24, V25**

Mond  
Struttura/Frame/Piètement/Gestell  
**V40, V4**

Tidy Wings  
Struttura/Frame/Piètement/Gestell  
**V4, V13, V62, V31, V61, V31, V19, V23**

## Seating

Benci  
Struttura/Frame/Piètement/Gestell  
**V4, VN1, VN4, V16**  
Carica device/Charging plug/Prise pour chargeurs/Ladestecker  
**V4, VN1, VN4, V16**

## Containment

Primo Tex 1000  
Corpo/Cabinet body/Caisson/Korpus  
Zoccolo/Plinth/Socle/Socket  
**V1, V23, V32, V33**

Ripiano aggiuntivo in metallo/Additional metal shelf/Tablette supplémentaire en métal/Zusätzlicher Metallfachboden  
**V1, V23, V32, V33**

Primo Sliding Doors, Primo Sliding Acoustic,  
Primo Open Cabinet 800/1000,  
**V1, V6, V22**

Appendiabiti/Clothes hanger/Tringle  
/Kleiderstange  
Primo Melamine Doors 1000,  
Primo Acoustic 1000  
**V1, V23, V32, V33**

Telaio singolo/Single pullout frame  
/Cadre extractible/Ausziehbarer Hängemappenrahmen  
Primo Cabinet 800/1000, Primo Melamine  
Doors 1000, Primo Acoustic 1000  
**V6**

Kit 2 telai estraibili/Set of 2 pullout frames  
/Jeu de 2 cadres extractibles  
/Set 2 ausziehbarer Hängemappenrahmen  
Primo Cabinet 800/1000, Primo Melamine  
Doors 1000, Primo Acoustic 1000  
**V6**

Zoccolo/Plinth/Socle/Socket  
Primo Cabinet 800/1000, Primo Open  
Cabinet 800/1000, Primo Melamine Doors  
1000, Primo Acoustic 1000, Primo Lateral  
800/1000, Primo Modular Elements  
800/1000, Primo Combi 1000,  
Primo Recycling, Tambours  
**V19**

Primo Air  
Corpo/Cabinet body/Caisson/Korpus  
**V51, VN3, V53**

# Finiture/Finishes/Finitions/Ausführungen

FINITURE METALLO/METAL FINISHES/FINITIONS MÉTAL/METALLISCHE AUSFÜHRUNGEN

## Personal Storage

Mia Ped  
Corpo/Cabinet body/Caisson/Korpus  
**V1, V2**  
Frontale e schiena/Fronts and backs/Façade  
et panneau arrière/Front und Rückwand  
**V1, V2, V17, V18**

CBox  
Corpo/Cabinet body/Caisson/Korpus  
**V1, V2, V6, V8, V14, V17, V18, V21, V22**

## Lockers

Echo Locker Digit, Echo Locker Crown  
Corpo/Cabinet body/Caisson/Korpus  
**V31**  
Anta/Door/Porte/Tür  
**V32**

Echo Locker Master  
Corpo/Cabinet body/Caisson/Korpus  
**V31**  
Anta/Door/Porte/Tür  
**WL1**

## Bookcase

CWave  
Struttura/Frame/Piètement/Gestell  
**V1, V6, V22**

Chiave di Volta  
Struttura/Frame/Piètement/Gestell  
**V1, V6, V16**

## Applicazione alle categorie di prodotto /Application to the product categories /Application aux catégories de produits /Anwendung auf Produktkategorien

**Colori opzionali**  
+10% per quantità minima 8 pcs. Tempo di consegna: 6 settimane.  
In caso di richieste di colori opzionali inferiori alla quantità minima ordinabile e per prodotti bicolore (Suggestions), oltre al 10% viene aggiunto il costo del cambio tinta (euro 200).

**Optional Colours**  
Extra cost 10% for minimum quantity 8 pcs. Delivery terms 6 weeks. In case of optional colours requests below the minimum order quantity and for two-tone products (Suggestions), colour changing costs will be added (EUR 200,00).

**Couleurs optionnelles**  
+10% pour une quantité minimale de 8 pièces. Délais de livraison : 6 semaines  
Pour des demandes de couleurs optionnelles inférieures à la quantité minimale et pour les produits bicolores (Suggestions), le coût pour le changement de couleur (200 euros) est rajouté au 10 %.

**Optionale Farben**  
+ 10% bei Mindestbestellmenge 8 Stck. Lieferzeit: 6 Wochen.  
Bei fakultativen Farben für Aufträge unter der Mindestbestellmenge und für zweifarbige Produkte (Suggestions) werden zusätzlich zum Aufschlag von 10% die Kosten für den Farbwechsel (200 Euro) hinzugefügt.

## Finiture/Finishes/Finitions/Ausführungen

FENIX, MDF PERFECT SENSE, MDF FINSA FIBRACOLOUR, MELAMINICO/FENIX, MDF PERFECT SENSE, MDF FINSA FIBRACOLOUR, MELAMINE /FENIX, MDF PERFECT SENSE, MDF FINSA FIBRACOLOUR, MÉLAMINÉ/FENIX, MDF PERFECT SENSE, MDF FINSA FIBRACOLOUR, MELAMIN

### Fenix



**FX1**  
Bianco/White/Blanc  
/Weiß/Cos



**FX2**  
Grigio/Grey/Gris/Grau  
/Efeso



**FX3**  
Grigio/Grey/Gris/Grau  
/Londra

### MDF Perfect Sense



**D1**  
Bianco opaco/Matt  
White/Blanc mat  
/Matt weiß



**D2**  
Grigio caldo/Warm  
grey/Gris chaud  
/Warmes Grau

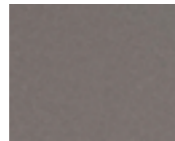


**D3**  
Nero opaco/Matt black  
/Noir mat/Mattschwarz

### MDF Finsa Fibracolor



**EZ1**  
Blu/Blue/Bleu/Blau



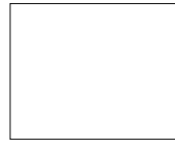
**EZ2**  
Antracite/Anthracite  
/Anthracite/Anthrazit



**EZ3**  
Giallo/Yellow/Jaune  
/Gelb

### Melaminico Melamine Melaminé Melamin

Opaco  
Matt  
Mat  
Matt



**M1**  
Bianco/White/Blanc  
/Weiß



**M2**  
Grigio chiaro  
/Light grey/Gris clair  
/Hellgrau



**M3**  
Nero/Black/Noir/  
Schwarz



**M4**  
Terrazzo grey

Essenza  
Wood  
Bois  
Holz



**MW1**  
Acero/Maple/Érable  
/Ahorn



**MW2**  
Rovere Naturale  
/Natural oak/Chêne  
naturel/Eiche natur



**MW3**  
Noce Naturale  
/ Natural Walnut  
/Noyer Naturel  
/Natürliche Walnuss



**MW4**  
Mabathu



**MW5**  
Frassino tinto nero  
/Black stained ash  
/Frêne teinté noir  
/Schwarz gebeizte  
Asche

## Finiture/Finishes/Finitions/Ausführungen

HPL, LAMINATO, LEGNO, MULTISTRATO CURVATO / HPL, LAMINATE, WOOD, CURVED PLYWOOD /HPL, STRATIFIÉ, BOIS, CONTREPLAQUÉ COURBÉ / HPLLAMINAT, HOLZ, GEBOGENES SPERRHOLZ

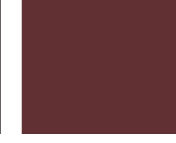
### HPL



**H3**  
Bianco/White/Blanc  
/Weiß



**H4**  
Cacao/Cocoa/Cacao  
/Kakao



**H5**  
Vino rosso/Wine red  
/Vin rouge/Weinrot



**H6**  
Verde/Green/Vert  
/Grün

### Legno Wood Bois Holz

Essenza  
Wood  
Bois  
Holz



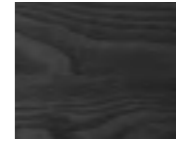
**W1**  
Pino giallo/Yellow-pine  
/Pin jaune/Gelb-Kiefer



**W2**  
Castagno chiaro  
/Light chestnut  
/Châtaignier clair  
/Kastanienholz hell



**W3**  
Rovere Naturale  
/Natural oak/Chêne  
naturel/Eiche natur



**W4**  
Frassino tinto nero  
/Black stained ash  
/Frêne teinté noir  
/Schwarz gebeizte  
Asche

Laccato  
Lacqué  
Laqué  
Lackiert



**WL1**  
Grigio platino/Platinum  
grey/Gris platine  
/Platingrau/RAL 7036  
Gloss



**WL2**  
Rosso beige/Beige red  
/Rouge beige /  
Beigerot/RAL 3012



**WL3**  
Verde reseda/Reseda  
green/Vert réséda  
/Resedagrün/RAL 6011



**WL4**  
Grigio cemento/Cement  
grey/Gris ciment  
/Zementgrau/RAL 7033



**WL5**  
Beige verdastrò/Green  
beige/Beige vert  
/Grünbeige/RAL 1000



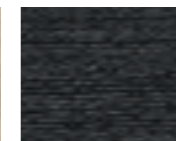
**WL6**  
Bianco/White/Blanc  
/Weiß/RAL 9010

### Multistrato curvato Curved plywood Contreplaqué courbé Gebogenes Sperrholz

Essenza  
Wood  
Bois  
Holz



**CW1**  
Rovere Naturale  
/Natural oak/Chêne  
naturel/Eiche natur



**CW2**  
Frassino tinto nero  
/Black stained ash  
/Frêne teinté noir  
/Schwarz gebeizte  
Asche

## Finiture/Finishes/Finitions/Ausführungen

RETE MELALLICA, FORBO, METACRILATO, PLEXIGLASS / PERFORATED SHEET METAL, FORBO, METHACRYLATE, PLEXIGLASS  
/ MÉTAL PERFORÉE, FORBO, MÉTHACRYLATE, PLEXIGLASS / MASCHENDRAHT, FORBO, METHACRYLAT, PLEXIGLASS

### Perforated sheet metal



PR1  
pure white/RAL 9010

PR2  
Gris 2900

PR3  
Gris 2800 Sablé

### Forbo



FO2  
4185  
Powder

FO1  
4176  
Mushroom

FO3  
4180  
Aquavert

FO4  
4184  
Olive

FO5  
4166  
Charcoal

### Metacrilato Methacrylate Méthacrylate Methacrylat



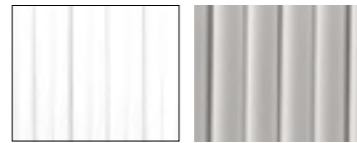
MET 1  
Blanco/White/Blanc  
/Weiß/Cos

### Plexiglass



PL01  
Frosted

### Tambours



S1  
Blanco/White/  
Blanc  
/Weiß/Malè

S2  
Alluminio/Aluminium  
/Aluminium/  
Aluminium

## Finiture/Finishes/Finitions/Ausführungen

VETRO, SPECCHIO / GLASS, MIRROR  
VERRE, MIROIR / GLAS, SPIEGELGLAS

### Vetro Glass Verre Glas

Lucido  
Polished  
Brillant  
Glänzend



G1  
Bianco/White/Blanc  
/Weiß

G2  
Glass

Temperato  
Tempered  
Trempe  
Gehärtet



GT1  
Trasparente/Transparent  
/Transparent/Transparent

### Specchio Mirror Miroir Spiegelglas



S1  
Mirror

### Applicazione alle categorie di prodotto /Application to the product categories /Application aux catégories de produits /Anwendung auf Produktkategorien

T-Share  
FX1, FX2, FX3  
D1, D2, D3  
M1, M2, MW1

Franny  
FO1, FO2, FO3, FO4, FO5  
WL5, WL2, WL3, WL4

Agreste  
H3, H4, H5, H6  
M1, M3, MW2

Dolomites  
PL01  
MW2, MW3, MW4

Mond  
MW2

Primo Tex  
EZ1, EZ2, EZ3

Primo Air  
MW3, MW4, MW5  
G2, S1  
PR1, PR2, PR3, PR4

Cuvée Low  
W3, W4, CW1, CW2

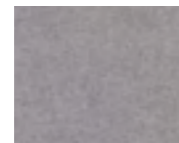
Echo Locker Master - Con luci e carica device  
/With lighting and charging plug/Avec éclairage  
et prise pour chargeur/Mit Beleuchtung und  
Ladestecker  
WL1

Tamburs  
S1, S2

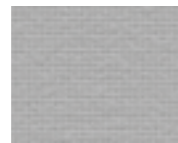
## Finiture/Finishes/Finitions/Ausführungen

TESSUTI/FABRICS/TISSUS/STOFFE

### Urban shades



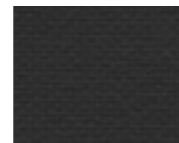
**T1**  
713  
Divina MD, Kvadrat



**T2**  
8001  
Jet, Fidivi



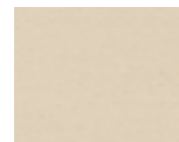
**T3**  
8009  
Jet, Fidivi



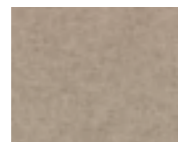
**T4** \*  
8033  
Jet, Fidivi



**T5** \*  
166  
Hallingdal 65, Kvadrat



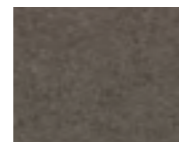
**T6**  
106  
Divina 3, Kvadrat



**T7**  
213  
Divina MD, Kvadrat



**T8**  
363  
Divina MD, Kvadrat



**T9**  
343  
Divina MD, Kvadrat

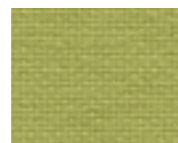


**T10** \*  
110  
Hallingdal 65, Kvadrat

### New classic



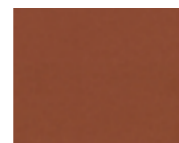
**T11**  
457  
Hallingdal 65, Kvadrat



**T12**  
7041  
Jet, Fidivi



**T13**  
3030  
Jet, Fidivi



**T14**  
481  
Hero, Kvadrat



**T15**  
4017  
Jet, Fidivi



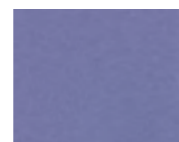
**T16**  
856  
Divina 3, Kvadrat



**T17**  
876  
Divina 3, Kvadrat



**T18**  
701  
Hero, Kvadrat



**T19**  
676  
Divina 3, Kvadrat



**T20**  
751  
Hero, Kvadrat

### Free spirit



**T28** \*  
3090  
Jet, Fidivi



**T30**  
66  
Mirage, Pugi · PR



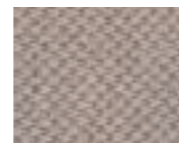
**T31**  
133  
Mirage, Pugi · PR



**T32**  
4027  
Jet, Fidivi



**T33**  
620  
Divina Melange 3  
Kvadrat



**T34**  
4522  
Sealife, Fidivi



**T24**  
462  
Mirage, Pugi · PR



**T25**  
463  
Mirage, Pugi · PR



**T26**  
367  
Mirage, Pugi · PR



**T27**  
757  
Divina Melange 3  
Kvadrat

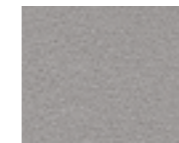


**T29**  
777  
Divina Melange 3,  
Kvadrat

## Finiture/Finishes/Finitions/Ausführungen

TESSUTI/FABRICS/TISSUS/STOFFE

Tessuto per pannello  
fonoassorbente e  
cuscino per panca  
/Fabric for sound-  
absorbing panel and  
seat pad for bench  
/Tissu pour panneau  
insonorisant et  
cousin pour banc  
/Stoff für  
Schalldämpfungspaneel  
und Kissen für  
Sitzbank



**TP3**  
629  
Mirage, Pugi · PR



**TP6**  
53  
Mirage, Pugi · PR



**TP2**  
651  
Mirage, Pugi · PR



**TP1**  
426  
Mirage, Pugi · PR



**TP5**  
231  
Mirage, Pugi · PR



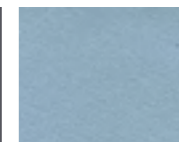
**TP7**  
Bianco 0001  
Caimi



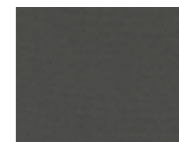
**TP8**  
Giallo 3008  
Caimi



**TP9**  
Grigio 8007  
Caimi

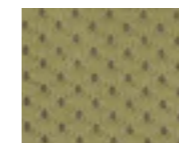


**TP4**  
386  
Mirage, Pugi · PR

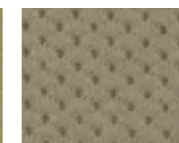


**TP11**  
2604  
Convert 2000, Pugi

Tessuto per anta  
fonoassorbente  
/Fabric for  
sound-absorbing door  
/Tissu pour porte  
insonorisante  
/Stoff für  
schallsolierende Tür



**TA1**  
verde/green/vert/grün



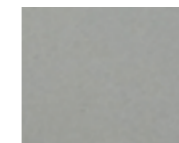
**TA2**  
beige/beige/beige/beige

### Limonta



**T81**  
Pepe Plus 115

### Pelle /Leather Clima Bio

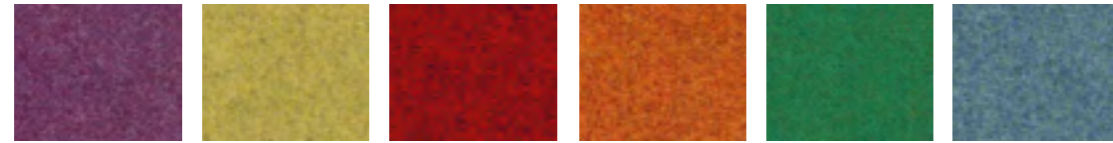


**L01**  
Resource  
1234

## Finiture/Finishes/Finitions/Ausführungen

TESSUTI/FABRICS/TEISSUS/STOFFE

Pugi • PR  
Fenice  
Convert 2000  
Mirage



**T35**  
252  
Fenice

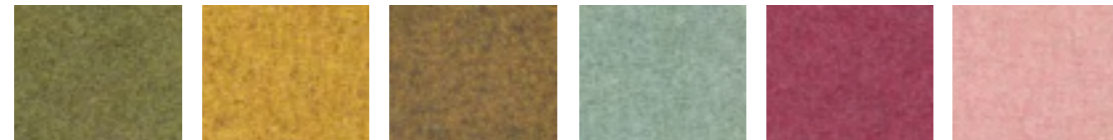
**T36**  
451  
Fenice

**T37**  
211  
Fenice

**T38**  
103  
Fenice

**T39**  
468  
Fenice

**T40**  
454  
Fenice



**T41**  
452  
Fenice

**T42**  
52  
Fenice

**T43**  
57  
Fenice

**T44**  
455  
Fenice

**T45**  
154  
Fenice

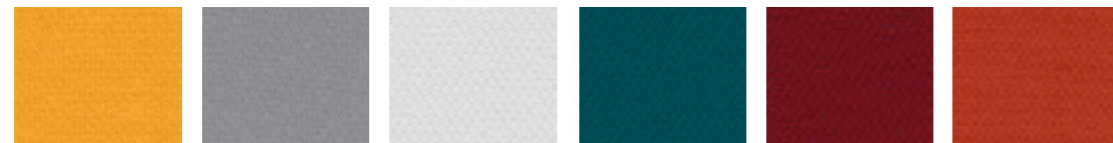
**T46**  
152  
Fenice



**T47**  
510  
Fenice

**T48**  
202  
Fenice

**T49**  
453  
Fenice



**T50**  
2051  
Convert 2000

**T51**  
2602  
Convert 2000

**T52**  
2612  
Convert 2000

**T53**  
2402  
Convert 2000

**T54**  
2203  
Convert 2000

**T55**  
2555  
Convert 2000



**T56**  
2308  
Convert 2000

**T73**  
2303  
Convert 2000

**T58**  
2602  
Convert 2000

**T74**  
2651  
Convert 2000



**T59**  
10527  
Mirage 3D

**T60**  
10571  
Mirage 3D

**T61**  
10643  
Mirage 3D

**T62**  
10625  
Mirage 3D

**T63**  
10487  
Mirage 3D

**T64**  
10360  
Mirage 3D

## Finiture/Finishes/Finitions/Ausführungen

TESSUTI/FABRICS/TEISSUS/STOFFE

Fischbacher  
Benu Talent Fr  
14619



**T65**  
902  
Benu Talent Fr 14619

**T66**  
912  
Benu Talent Fr 14619

**T67**  
914  
Benu Talent Fr 14619

**T68**  
934  
Benu Talent Fr 14619

**T69**  
924  
Benu Talent Fr 14619

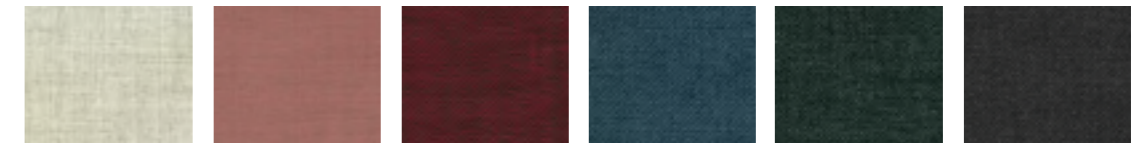
**T70**  
913  
Benu Talent Fr 14619



**T71**  
947  
Benu Talent Fr 14619

**T72**  
932  
Benu Talent Fr 14619

Camira



**T75**  
SUR01 Tang  
Sumi

**T76**  
SUR20 Yabu  
Sumi

**T77**  
SUR07 Abico  
Sumi

**T78**  
SUR25 Uto  
Sumi

**T79**  
SUR16 Kama  
Sumi

**T80**  
SUR17 Nara  
Sumi

Tessuti/Fabrics  
/Tissus/Stoffe

Applicazione alle  
categorie di prodotto  
/Application to the  
product categories  
/Application aux  
catégories de produits  
/Anwendung auf  
Produktkategorien

Franny  
T36, T38, T40, T41, T42, T44, T46, T47, T48  
T49, T65, T66, T67, T68, T69, T70, T71

Zoe  
T32, T35, T36, T37, T38, T39, T40, T41, T42  
T43, T44, T45, T46, T47, T68, T70, T71

Dolomites  
T50, T52, T53, T54, T56, T57, T58

Mond  
T50, T51, T52, T53, T54, T73

CBox  
T2, T3, T4, T12, T13, T15 T24, T25  
T26, T28, T30, T31, T32

Pannello fonoassorbente  
/Sound-absorbing panel  
/Panneau insonorisant  
/Schalldämpfungspaneel  
TP1, TP2, TP3, TP4, TP5, TP6 / Benci

T-Share  
Dolomites  
TP7, TP8, TP9

Benci  
DotBox Desk  
TP1, TP2, TP3, TP4  
TP5, TP6

Cuvée  
T75, T76, T77, T78  
T79, T80

\* Suggestions



## Ordini/Orders/Ordres/Aufträge

### Certificazioni e condizioni di vendita

Tutti i nostri prodotti possono essere personalizzati con una finitura selezionata tra quelle da noi proposte nella cartella finiture vernici e tessuti. I prodotti del presente listino sono modelli brevettati. Tutti i diritti di legge sono riservati.

I colori sopra evidenziati, sono intesi solo come guida e non riflettono sempre le finiture reali. Vi preghiamo di riferirvi sempre alle cartelle RAL o campioni originali per una informazione più precisa. Se non direttamente specificato, la verniciatura si intende con finitura semi lucida.  
In caso di richieste di colori opzionali inferiori alla quantità minima ordinabile, viene aggiunto il costo del cambio tinta (euro 200,00).

Nessuna parte di questa pubblicazione può essere riprodotta, registrata o trasmessa in nessuna forma o per alcun motivo (elettronico, meccanico, fotocopiato, registrato o altro) senza il preventivo permesso del proprietario del copyright. I trasgressori saranno perseguiti a termini di legge.

### Certifications and terms of sale

All our products can be customized with a finish selected among the ones proposed in the Paints and Fabrics Finishes folder. The products found on this list are patented models. All legal rights are reserved.

Colours shown above are pure indications and are not representative of actual finishes. Please refer to either RAL colour scale or original samples for more accurate information. If not specified, all colours are in a semi-gloss finish. In case of optional colours requests below the minimum order quantity, hue changing cost will be added (EUR 200.00).

No part of this publication may be reproduced, recorded or transmitted in any form or for any reason (electronic, mechanical, photocopied, recorded or otherwise) without the prior permission of the copyright owner. Offenders will be prosecuted under law.

### Certifications et conditions de vente

Tous nos produits peuvent être personnalisés avec une finition sélectionnée parmi celles qui sont proposées dans le nuancier couleurs et tissus. Les produits de ce tarif sont des modèles brevetés. Tous droits réservés.

Les coloris mentionnés plus haut sont seulement indicatifs et ne reflètent pas toujours les finitions réelles. Nous vous prions d'utiliser toujours les fiches RAL ou des échantillons originaux pour plus de précision. Sauf indication contraire, le vernis est semi-brillant.  
En cas de demandes de couleurs optionnelles pour des commandes qui n'arrivent pas à la quantité minimale, il faut ajouter le prix pour le changement de couleur (200 euro).

Cette publication ne peut être en aucun cas reproduite, enregistrée ou transmise (ne serait-ce qu'en partie) sous un quelconque format ou prétexte (électronique, mécanique, photocopié ou autre) sans l'autorisation préalable du propriétaire du copyright. Les transgresseurs seront poursuivis en justice.

### Zertifizierungen und allgemeine Verkaufsbedingungen

Unsere Produkte können auf den persönlichen Geschmack abgestimmt werden; die möglichen Farbkombinationen und Oberflächenbehandlung sind unserer Mustermappe zu entnehmen. Die Produkte dieser Liste sind patentierte Modelle. Alle gesetzlichen Rechte sind vorbehalten.

Die oben genannten Farben sollen nur als Angabe dienen und absolut nicht als realer Farbton aufgefasst werden. Bitte benutzen Sie immer die RAL-Tabelle oder ein originales Farbmuster für den genauen Farbton. Wenn nicht anders genannt ist die Lackierung immer in der Version halbgänzend.  
Im Falle von spezifischen Farbtönen, welche nicht die Mindestbestellmenge erreichen, bitte immer den Spezialfarbbaupreis einkalkulieren (200 Euro).

Kein Teil dieser Publikation darf ohne die vorherige Genehmigung des Urheberrechtsinhabers in irgendeiner Form oder aus irgendeinem Grund reproduziert, aufgezeichnet oder weitergegeben werden (elektronisch, mechanisch, fotokopiert, registriert oder anderweitig). Verstöße werden strafrechtlich verfolgt.

### Metalli test Metal test Test métaux Test Metalle

UNI EN ISO 2409:2020  
NSS UNI EN ISO 9227:2017  
UNI EN 15187:2007  
UNI EN 12720:2013  
UNI EN 12721:2013  
UNI 9429:2022

EN ISO 1520:2006  
UNI EN 15185:2011/EC1:2011  
UNI EN 15186:2012, met.B  
UNI 9300:2020  
UNI EN 12722:2013

## Notes



dieffebi  
Sede di  
San Vendemiano  
Treviso



ADIMEMBER





**Dieffebi SpA**

via Palù 36  
31020 San Vendemiano,  
Treviso - Italia  
T +39 0438 4715  
F +39 0438 471600  
marketing@dieffebi.com  
exportsales@dieffebi.com  
venditeitalia@dieffebi.com  
www.dieffebi.com

**Showroom Milano**

Via Milazzo, 8  
20121 Milano

**Showroom Londra**

104 - 110 Goswell Road  
BDM - 2nd Floor  
London EC1V 7DH

